

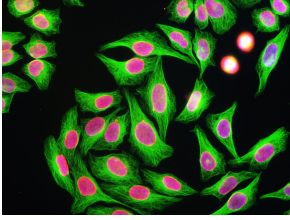
Anti-beta Tubulin Antibody [4E4] (A85429)

Specifications:

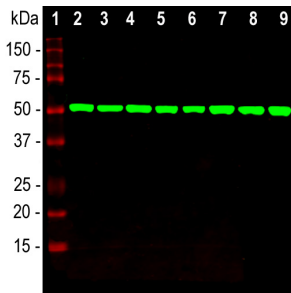
Name:	Anti-beta Tubulin Antibody [4E4]
Description:	Mouse monoclonal (4E4) antibody to beta Tubulin.
Specificity:	This antibody reacts with recombinant beta Tubulin but not recombinant alpha Tubulin by ELISA and dot blots.
Applications:	WB, ICC/IF, IHC
Recommended Dilutions:	WB: 1:5,000-1:10,000, ICC/IF: 1:1,000-1:5,000, IHC: 1:1,000-1:5,000
Reactivity:	Human, Monkey, Rat, Mouse
Immunogen:	Pig brain tubulin preparation.
Host:	Mouse
Clonality:	Monoclonal
Clone ID:	4E4
Isotype:	IgG2a
Conjugate:	Unconjugated
Purification:	Immunogen affinity purification.
Concentration:	1 mg/ml
Molecular Weight:	50 kDa
Product Form:	Liquid
Formulation:	Supplied in Phosphate Buffered Saline with 50% Glycerol and 5mM Sodium Azide.
Storage:	Shipped at 4°C. Upon delivery aliquot and store at -20°C. Avoid freeze / thaw cycles.
Disclaimer:	This product is for research use only. It is not intended for diagnostic or therapeutic use.

Anti-beta Tubulin Antibody [4E4] (A85429)

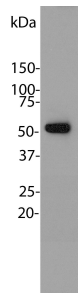
Images:



HeLa cells stained with Anti-Beta Tubulin Antibody (green), Anti-Lamin A/C Antibody (A85443 | red) and DNA (DAPI | blue). The Anti-Beta Tubulin Antibody reveals strong microtubular staining in the cytoplasm of HeLa cells, while the Lamin A/C localizes in the nuclear membrane.



Western blot analysis of equal amounts of cell line and whole brain lysates using Anti-Beta Tubulin Antibody (1:5,000 | green): [1] protein standard (red), [2] HEK293, [3] HeLa, [4] SH-SY5Y, [5] COS-1, [6] NIH-3T3, [7] C6 cells, [8] rat brain, and [9] mouse brain. Strong band at 50 kDa corresponds to the β -tubulin proteins.



Blot of HeLa cell lysates blotted with Anti-Beta Tubulin Antibody. Note the single sharp clean band corresponding to β -tubulin at 55 kDa.