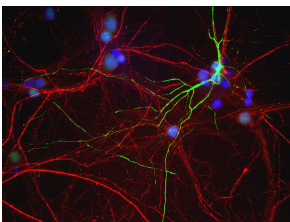


Anti-Peripherin Antibody (A85430)

Specifications:

Name:	Anti-Peripherin Antibody
Description:	Rabbit polyclonal antibody to Peripherin.
Applications:	WB, ICC/IF, IHC
Recommended Dilutions:	WB: 1:1,000-1:2,000, ICC/IF: 1:2,000, IHC: 1:2,000
Reactivity:	Human, Rat, Mouse, Porcine, Bovine
Immunogen:	Recombinant full-length human Peripherin, expressed in and purified from E. coli.
Host:	Rabbit
Clonality:	Polyclonal
Isotype:	IgG
Conjugate:	Unconjugated
Molecular Weight:	57 kDa
Purity:	Whole antiserum.
Product Form:	Liquid
Formulation:	Supplied as an aliquot of serum with 5mM Sodium Azide.
Storage:	Shipped at 4°C. Upon delivery aliquot and store at -20°C. Avoid freeze / thaw cycles.
Disclaimer:	This product is for research use only. It is not intended for diagnostic or therapeutic use.

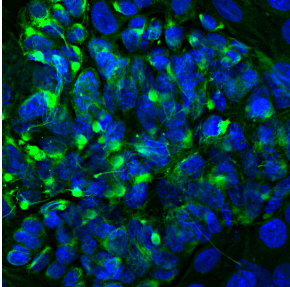
Images:



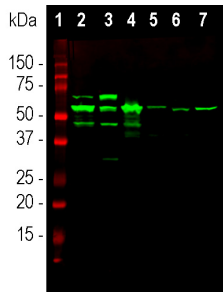
Mixed neuron/glia cultures from newborn rat brain stained with Anti-Peripherin Antibody (green) and Anti-NF-H Antibody (A85337 | red). A class of large neurons, like the one at the top right of this image, contain peripherin, while the majority of neurons and their processes contain NF-H and not peripherin. The blue channel reveals the localization of DNA.

Anti-Peripherin Antibody (A85430)

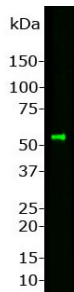
Images continued:



Immunofluorescent analysis of the widely used rat pheochromocytoma PC12 cell line stained with Anti-Peripherin Antibody (A85430), at a dilution of 1:2,000, in green. The nuclear DNA is visualised in blue using Hoechst staining. Peripherin, one of the Class III family of intermediate filament subunit proteins, is a major component of the PC12 cell, forming a perinuclear cap with some filaments visible in the cytoplasm.



Western blot analysis of tissue and cell lysates using Anti-Peripherin Antibody (A85430), at a dilution of 1:10,000 in green. The lanes contain samples of: [1] Protein standards, [2] rat spinal cord, [3] mouse spinal cord, [4] pig spinal cord, [5] cow spinal cord, [6] SH-SY5Y cells and [7] PC12 cells. The major band at approximately 57 kDa corresponds to the major peripherin protein isoform, while other bands presumably represent protein products of alternate transcripts of the peripherin gene.



Western blot of whole rat spinal cord homogenate stained with Anti-Peripherin Antibody (1:1,000). A prominent band running with an apparent SDS-PAGE molecular weight of ~57 kDa corresponds to Peripherin.