

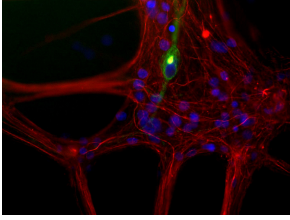
Anti-Peripherin Antibody [7C5] (A85432)

Specifications:

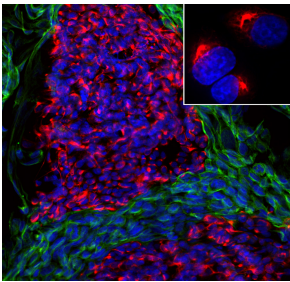
Name:	Anti-Peripherin Antibody [7C5]
Description:	Mouse monoclonal (7C5) antibody to Peripherin.
Applications:	WB, ICC/IF, IHC
Recommended Dilutions:	WB: 1:1,000, ICC/IF: 1:200, IHC: 1:200
Reactivity:	Rat, Mouse, Porcine, Bovine
Cross Reactivity:	This antibody does not cross-react with Human.
Immunogen:	Recombinant full-length rat peripherin, expressed in and purified from E. coli.
Host:	Mouse
Clonality:	Monoclonal
Clone ID:	7C5
Isotype:	IgG1
Conjugate:	Unconjugated
Purification:	Immunogen affinity purification.
Concentration:	1 mg/ml
Molecular Weight:	~57 kDa
Product Form:	Liquid
Formulation:	Supplied in Phosphate Buffered Saline with 50% Glycerol and 5mM Sodium Azide.
Storage:	Shipped at 4°C. Upon delivery aliquot and store at -20°C. Avoid freeze / thaw cycles.
Disclaimer:	This product is for research use only. It is not intended for diagnostic or therapeutic use.

Anti-Peripherin Antibody [7C5] (A85432)

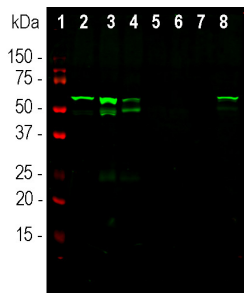
Images:



Mixed neuron/glia cultures from newborn rat brain stained with Anti-Peripherin Antibody (green) and Anti-NF-L Antibody (A85451 | red). A class of large neurons, like the one in the middle of this image, contain peripherin, while the majority of neurons and their processes contain NF-L and not peripherin. Interestingly, the peripherin positive cells often contain a cytoplasmic inclusion next to the nucleus which stains for both peripherin and NF-L, and so appears golden in this kind of image. The blue channel reveals the localization of DNA. Note this antibody is specific for rodent peripherin and does not bind human peripherin.



Immunofluorescent analysis of mixed fibroblast and rat pheochromocytoma PC12 cell culture stained with Anti-Peripherin Antibody [7C5] (A85432), at a dilution of 1:500, in red, and co-stained with Anti-Vimentin Antibody (A85421), at a dilution of 1:10,000, in green. The nuclear DNA is visualised in blue using Hoechst staining. The Anti-Peripherin Antibody [7C5] (A85432) reveals cytoplasmic filamentous staining in the small PC12 cells, while the Anti-Vimentin Antibody (A85421) stains intermediate filaments in the surrounding fibroblastic cells which do not express peripherin.



Western blot analysis of tissue and cell lysates using Anti-Peripherin Antibody [7C5] (A85432), at a dilution of 1:1,000, in green. The lanes contain samples of: [1] Protein standards, [2] rat spinal cord, [3] rat sciatic nerve, [4] mouse spinal cord, [5] pig spinal cord, [6] cow spinal cord, [7] SH-SY5Y cells, and [8] PC12 cells. The band at approximately 57 kDa corresponds to the peripherin protein. This is detected only in rat and mouse lysates, since the antibody is rodent specific.