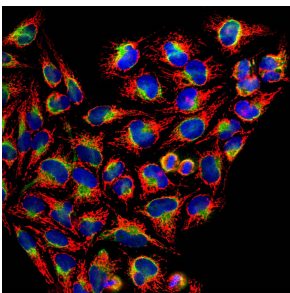


Anti-HSP60 Antibody (A85437)

Specifications:

Name:	Anti-HSP60 Antibody
Description:	Rabbit polyclonal antibody to HSP60.
Applications:	WB, ICC/IF, IHC
Recommended Dilutions:	WB: 1:5,000-1:10,000, ICC/IF: 1:5,000, IHC: 1:5,000
Reactivity:	Human, Rat, Mouse, Bovine, Porcine, Horse, Canine, Monkey
Immunogen:	Recombinant full-length human HSP60, expressed in and purified from E. coli.
Host:	Rabbit
Clonality:	Polyclonal
Isotype:	IgG
Conjugate:	Unconjugated
Purity:	Whole antiserum.
Product Form:	Liquid
Formulation:	Supplied as an aliquot of serum with 5mM Sodium Azide.
Storage:	Shipped at 4°C. Upon delivery aliquot and store at -20°C. Avoid freeze / thaw cycles.
Disclaimer:	This product is for research use only. It is not intended for diagnostic or therapeutic use.

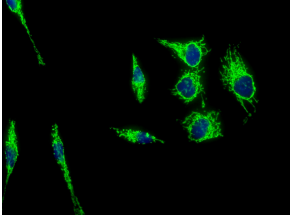
Images:



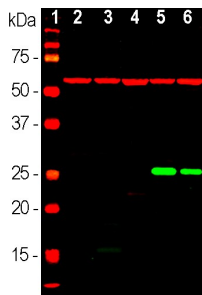
Confocal immunofluorescent analysis of HeLa cells stained with Anti-Heat Shock Protein 60 Antibody (1:1,000 | red) and Anti-Vimentin Antibody (A85421 | 1:1,000 | green). The blue is DAPI staining of nuclear DNA. The Anti-Heat Shock Protein 60 Antibody gives strong and specific staining of mitochondria while the Anti-Vimentin Antibody reveals cytoplasmic intermediate filaments.

Anti-HSP60 Antibody (A85437)

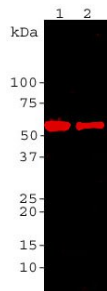
Images continued:



HeLa cells were stained with Anti-Heat Shock Protein 60 Antibody (green). Blue is DAPI staining of DNA. The Anti-Heat Shock Protein 60 Antibody reveals strong staining in mitochondria.



Western blot analysis of different tissue or cell lysates using Anti-Heat Shock Protein 60 Antibody (1:5,000 | red): [1] protein standard, [2] rat brain, [3] mouse brain, [4] NIH-3T3, [5] HEK293, [6] HeLa, [7] SH-SY5Y cells. The strong 60kDa band present in all preparations corresponds to the HSP60 protein. The blot was simultaneously probed with Anti-Heat Shock Protein 27 Antibody (A85358 | 1:10,000 | green). Strong single band at ~27kDa corresponds to the HSP27 protein, detected only in human cell lines since this particular antibody does not recognize rodent HSP27.



Western blot analysis of Anti-Heat Shock Protein 60 Antibody. Blot of HeLa cells lysates (Lane 1) and rat brain extracts (Lane 2) was probed with Anti-Heat Shock Protein 60 Antibody. This antibody recognizes cleanly and strongly the Hsp60 protein band at 60 kDa.