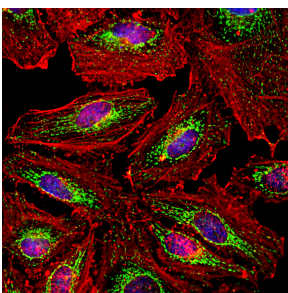


Anti-HSP60 Antibody (A85438)

Specifications:

Name:	Anti-HSP60 Antibody
Description:	Chicken polyclonal antibody to HSP60.
Applications:	WB, ICC/IF, IHC
Recommended Dilutions:	WB: 1:10,000-1:20,000, ICC/IF: 1:2,000-1:5,000, IHC: 1:2,000-1:5,000
Reactivity:	Human, Rat, Mouse, Horse, Canine, Monkey, Porcine, Bovine
Immunogen:	Recombinant full-length human HSP60, expressed in and purified from E. coli.
Host:	Chicken
Clonality:	Polyclonal
Isotype:	IgY
Conjugate:	Unconjugated
Molecular Weight:	60 kDa
Purity:	IgY preparation.
Product Form:	Liquid
Formulation:	Supplied as an aliquot of IgY preparation with 5mM Sodium Azide.
Storage:	Shipped at 4°C. Upon delivery aliquot and store at -20°C. Avoid freeze / thaw cycles.
Disclaimer:	This product is for research use only. It is not intended for diagnostic or therapeutic use.

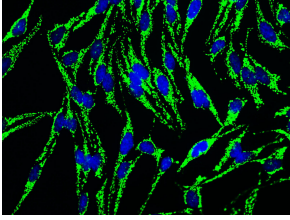
Images:



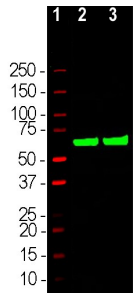
Immunofluorescent analysis of HeLa cells stained with Anti-Heat Shock Protein 60 Antibody (1:5,000 | green) and Anti-Actin Antibody (A85388 | 1:500 | red). Blue is DAPI staining of nuclear DNA. The Anti-Heat Shock Protein 60 Antibody produces strong and specific staining of mitochondria, while the Anti-Actin Antibody labels the submembranous cytoskeleton, stress fibers and bundles of actin associated with cell adhesion sites.

Anti-HSP60 Antibody (A85438)

Images continued:



HeLa cells were stained with CPCA-HSP60 (green). Blue is DAPI staining of DNA. The CPCA-HSP60 antibody reveals strong staining in mitochondria.



Western blot analysis of different cell lysates using Anti-HSP60 Antibody (1:20,000 | green): [1] protein standard (red), [2] SH-SY5Y cells, [3] HeLa cells. Strong single band corresponds to the HSP60 protein with an apparent SDS-PAGE molecular weight of 60kDa.