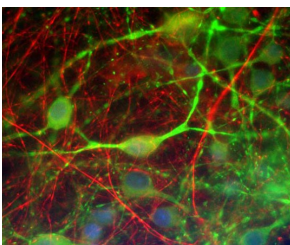


Anti-alpha Internexin Antibody [1D2] (A85447)

Specifications:

Name:	Anti-alpha Internexin Antibody [1D2]
Description:	Mouse monoclonal (1D2) antibody to alpha Internexin.
Applications:	WB, ICC/IF, IHC
Recommended Dilutions:	WB: 1:10,000, ICC/IF: 1:5,000, IHC: 1:5,000
Reactivity:	Human, Feline, Rat, Mouse
Immunogen:	Recombinant full-length rat alpha Internexin, expressed in and purified from E. coli.
Host:	Mouse
Clonality:	Monoclonal
Clone ID:	1D2
Isotype:	IgG1
Conjugate:	Unconjugated
Purification:	Immunogen affinity purification.
Concentration:	1 mg/ml
Molecular Weight:	64-66 kDa (by SDS-PAGE)
Product Form:	Liquid
Formulation:	Supplied in Phosphate Buffered Saline with 50% Glycerol and 5mM Sodium Azide.
Storage:	Shipped at 4°C. Upon delivery aliquot and store at -20°C. Avoid freeze / thaw cycles.
Disclaimer:	This product is for research use only. It is not intended for diagnostic or therapeutic use.

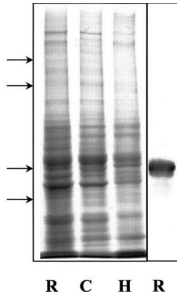
Images:



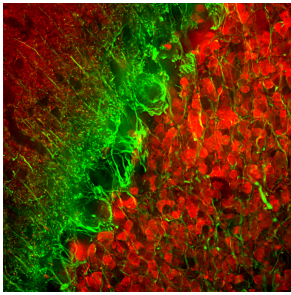
Mixed cultures of rat CNS cells stained with Anti-a-Internexin Antibody (red) and Anti-MAP2 Antibody (A85363 | green). The a-internexin is localized primarily in neuronal axons in these cultures, while the perikarya and dendrites of neurons stain strongly for MAP2.

Anti-alpha Internexin Antibody [1D2] (A85447)

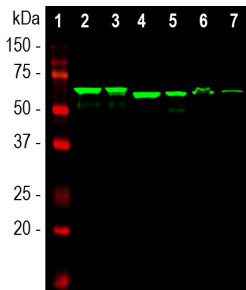
Images continued:



Left three lanes show Coomassie brilliant blue stained extracts of rat brain stem, cat cerebral cortex and human cerebral cortex (R, C and H respectively). Right three lanes are corresponding blots reacted with Anti-a-Internexin Antibody. Anti-a-Internexin Antibody stains a band of about 66kDa in all three preparations.



Immunofluorescent analysis of rat cerebellum section stained with Anti-alpha Internexin Antibody [1D2] (A85447), at a dilution of 1:5,000, in green, and co-stained with Anti-Calretinin Antibody (A104312), 1:2,000 in red. Following transcardial perfusion of the rat with 4% paraformaldehyde, the brain was post-fixed for 24 hours, cut to 45 μ m, and free-floating sections were stained with the above antibodies. The Anti-alpha Internexin Antibody [1D2] (A85447) selectively stains neuronal processes, in particular parallel fibers, the axons of granule cells. The Anti-Calretinin Antibody (A104312) stains interneurons predominantly in the molecular layer of the cerebellum.



Western blot analysis of different tissue lysates using Anti-alpha Internexin Antibody [1D2] (A85447), at a dilution of 1:10,000, in green. The lanes contain samples of: [1] Protein standards, [2] rat brain, [3] rat spinal cord, [4] mouse brain, [5] mouse spinal cord, [6] pig spinal cord, and [7] cow spinal cord. The Anti-alpha Internexin Antibody [1D2] (A85447) reveals the alpha Internexin protein with an apparent molecular weight of 64-66 kDa, with slight variability between species.