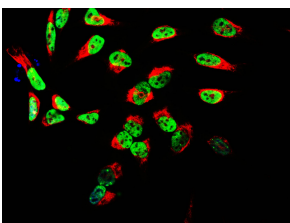


Anti-TAF15 Antibody [4D71] (A85450)

Specifications:

Name:	Anti-TAF15 Antibody [4D71]
Description:	Mouse monoclonal (4D71) antibody to TAF15.
Applications:	WB, ICC/IF
Recommended Dilutions:	WB: 1:1,000, ICC/IF: 1:500-1:1,000
Reactivity:	Human, Rat, Mouse
Immunogen:	Recombinant full-length human TAF15, expressed in and purified from E. coli.
Host:	Mouse
Clonality:	Monoclonal
Clone ID:	4D71
Isotype:	IgG1
Conjugate:	Unconjugated
Purification:	Immunogen affinity purification.
Concentration:	1 mg/ml
Molecular Weight:	56 kDa, 68 kDa
Product Form:	Liquid
Formulation:	Supplied in Phosphate Buffered Saline with 50% Glycerol and 5mM Sodium Azide.
Storage:	Shipped at 4°C. Upon delivery aliquot and store at -20°C. Avoid freeze / thaw cycles.
Disclaimer:	This product is for research use only. It is not intended for diagnostic or therapeutic use.

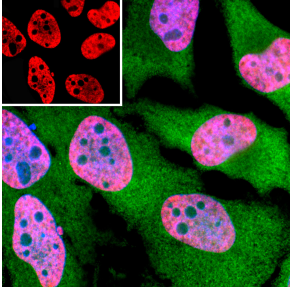
Images:



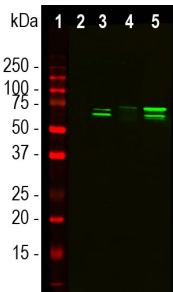
HeLa cell cultures stained with Anti-TAF15 Antibody (green) and Anti-Vimentin Antibody (A85421 | red). Anti-TAF15 Antibody reveals a granular nuclear localization typical of many RNA associated proteins. Blue is a DNA stain.

Anti-TAF15 Antibody [4D71] (A85450)

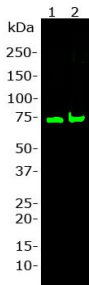
Images continued:



Immunofluorescent analysis of HeLa cells stained with Anti-TAF15 Antibody [4D71] (A85450), at a dilution of 1:500 in red, and co-stained with Anti-GAPDH Antibody (A85377), at a dilution of 1:1,000 in green. Blue is Hoechst staining of nuclear DNA. The Anti-TAF15 Antibody [4D71] (A85450) reveals TAF15 protein expressed exclusively in the nuclei of the cells, while Anti-GAPDH Antibody (A85377) produces strong cytoplasmic staining.



Western blot analysis of cytosol or nuclear enriched fractions of cell line lysates using Anti-TAF15 Antibody [4D71] (A85450), at a dilution of 1:1,000, in green. The lanes contain samples of: [1] Protein standards, in red, [2] NIH-3T3 cytosol, [3] NIH-3T3 nuclear fraction, [4] HeLa cytosol, and [5] HeLa nuclear fraction. Double band at 56kDa and 68kDa detected predominantly in the nuclear enriched fraction corresponds to the TAF15 protein.



Blot of 20 μ g HeLa cell lysate (Lane 1) and 20 μ g HEK293 cell lysate (Lane 2) was probed with Anti-TAF15 Antibody (1: 1,000). The Anti-TAF15 Antibody binds strongly and cleanly to a band at about 68 kDa corresponding to TAF15.