

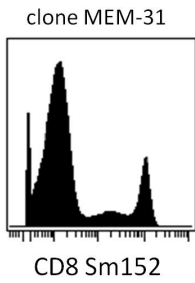
## Anti-CD8 Antibody [MEM-31] (A85485)

### Specifications:

Name:	Anti-CD8 Antibody [MEM-31]
Description:	Mouse monoclonal [MEM-31] antibody to CD8.
Specificity:	This antibody recognizes a conformationally-dependent extracellular epitope of CD8, a cell surface glycoprotein found on most cytotoxic T lymphocytes that mediates efficient cell-cell interactions within the immune system. CD8 is a disulfide-linked dimer and exists as a CD8 alpha/alpha homodimer or CD8 alpha/beta heterodimer (each monomer approx. 32-34 kDa). The antibody does not react with formaldehyde-fixed cells; negative in western blotting.
Applications:	Flow Cytometry, IP, CyTOF
Recommended Dilutions:	Flow Cytometry: 1 µg/ml
Reactivity:	Human
Immunogen:	Crude thymus membrane fraction.
Host:	Mouse
Clonality:	Monoclonal
Clone ID:	MEM-31
Isotype:	IgG2a
Conjugate:	Unconjugated
Purification:	Protein A chromatography.
Concentration:	1 mg/ml
Purity:	> 95% (by SDS-PAGE).
Product Form:	Liquid
Formulation:	Supplied in Phosphate Buffered Saline, pH 7.4, with 15 mM Sodium Azide.
Storage:	Shipped at 4°C. Upon delivery aliquot and store at -20°C. Avoid freeze / thaw cycles.
Disclaimer:	This product is for research use only. It is not intended for diagnostic or therapeutic use.

## Anti-CD8 Antibody [MEM-31] (A85485)

Images:



Surface staining (mass cytometry) of PBMC after Ficoll-Paque separation with Anti-CD8 Antibody (A85485). Gated on singlets.