

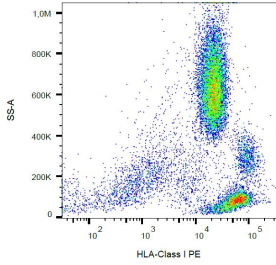
## Anti-HLA Class I Antibody [W6/32] (PE) (A85487)

### Specifications:

Name:	Anti-HLA Class I Antibody [W6/32] (PE)
Description:	Mouse monoclonal [W6/32] antibody to HLA Class I (PE).
Specificity:	The antibody W6/32 recognises MHC Class I molecules (MHC Class Ia) that are expressed on the surface of all human nucleated cell types. The antibody W6/32 is a valuable reagent for analysing variations in HLA class I expression in different disease states e.g. liver disease, muscular dystrophy, inflammatory myopathy and other neuromuscular disorders. This antibody W6/32 is also suitable as a positive control for HLA tissue typing and crossmatching.
Applications:	Flow Cytometry
Recommended Dilutions:	Flow Cytometry: 1-5 µg/ml
Reactivity:	Human, Bovine, Feline, Non-Human Primates
Immunogen:	Membrane of human tonsil cells.
Host:	Mouse
Clonality:	Monoclonal
Clone ID:	W6/32
Isotype:	IgG2a
Conjugate:	PE
Purification:	This antibody is conjugated with PE under optimum conditions. The conjugate is purified by size-exclusion chromatography.
Concentration:	0.1 mg/ml
Product Form:	Liquid
Formulation:	Supplied in Phosphate Buffered Saline with 15 mM Sodium Azide.
Storage:	Store in the dark at 2-8°C. Do not freeze!
Disclaimer:	This product is for research use only. It is not intended for diagnostic or therapeutic use.

## Anti-HLA Class I Antibody [W6/32] (PE) (A85487)

Images:



Surface staining of human peripheral blood cells with Anti-HLA Class I Antibody (A85487).