

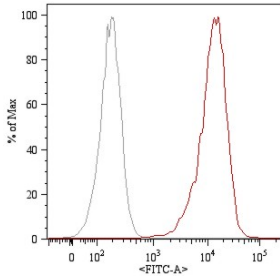
Anti-CD105 Antibody [MEM-226] (FITC) (A85498)

Specifications:

Name:	Anti-CD105 Antibody [MEM-226] (FITC)
Description:	Mouse monoclonal [MEM-226] antibody to CD105 (FITC).
Specificity:	This antibody reacts with an extracellular epitope of CD105, a 90 kDa type I homodimerizing membrane glycoprotein expressed on vascular endothelial cells (small and large vessels), activated monocytes and tissue macrophages, stromal cells of certain tissues including bone marrow, pre-B lymphocytes in fetal marrow, and erythroid precursors in fetal and adult bone marrow. It is also present on syncytiotrophoblast on placenta throughout pregnancy.
Applications:	Flow Cytometry
Recommended Dilutions:	Flow Cytometry: This reagent is designed for analysis of human blood cells using 20 µl reagent / 100 µl of whole blood or 10 ⁶ cells in a suspension.
Reactivity:	Human, Rat
Immunogen:	Recombinant Vaccinia virus containing the human CD105 cDNA.
Host:	Mouse
Clonality:	Monoclonal
Clone ID:	MEM-226
Isotype:	IgG2a
Conjugate:	FITC
Purification:	This antibody is conjugated with FITC under optimum conditions. The conjugate is purified by size-exclusion chromatography.
Product Form:	Liquid
Formulation:	Supplied in Phosphate Buffered Saline with 15 mM Sodium Azide.
Storage:	Store in the dark at 2-8°C. Do not freeze!
Disclaimer:	This product is for research use only. It is not intended for diagnostic or therapeutic use.

Anti-CD105 Antibody [MEM-226] (FITC) (A85498)

Images:



Surface staining (flow cytometry) of HUVEC (human umbilical vein endothelial cells) with Anti-CD105 Antibody (A85498). Total viable cells were used for analysis.