

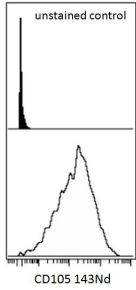
## Anti-CD105 Antibody [MEM-226] (A85500)

### Specifications:

Name:	Anti-CD105 Antibody [MEM-226]
Description:	Mouse monoclonal [MEM-226] antibody to CD105.
Specificity:	This antibody reacts with an extracellular epitope of CD105, a 90 kDa type I homodimerizing membrane glycoprotein expressed on vascular endothelial cells (small and large vessels), activated monocytes and tissue macrophages, stromal cells of certain tissues including bone marrow, pre-B lymphocytes in fetal marrow, and erythroid precursors in fetal and adult bone marrow. It is also present on syncytiotrophoblast on placenta throughout pregnancy.
Applications:	Flow Cytometry, IP, WB, CyTOF
Recommended Dilutions:	Flow Cytometry: 2 µg/ml
Reactivity:	Human, Rat
Immunogen:	Recombinant Vaccinia virus containing the human CD105 cDNA.
Host:	Mouse
Clonality:	Monoclonal
Clone ID:	MEM-226
Isotype:	IgG2a
Conjugate:	Unconjugated
Purification:	Protein A chromatography.
Concentration:	1 mg/ml
Purity:	> 95% (by SDS-PAGE).
Product Form:	Liquid
Formulation:	Supplied in Phosphate Buffered Saline, pH 7.4, with 15 mM Sodium Azide.
Storage:	Shipped at 4°C. Upon delivery aliquot and store at -20°C. Avoid freeze / thaw cycles.
Disclaimer:	This product is for research use only. It is not intended for diagnostic or therapeutic use.

## Anti-CD105 Antibody [MEM-226] (A85500)

Images:



Surface staining (mass cytometry) of hTERT cell line with Anti-CD105 Antibody (A85500). Gated on singlets.