

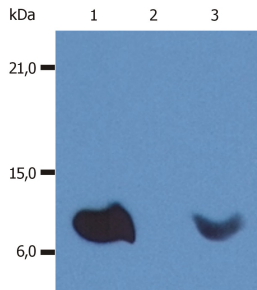
Anti-beta 2 Microglobulin Antibody [B2M-01] (A85545)

Specifications:

Name:	Anti-beta 2 Microglobulin Antibody [B2M-01]
Description:	Mouse monoclonal [B2M-01] antibody to beta 2 Microglobulin.
Specificity:	This antibody reacts with beta 2 Microglobulin (extracellular antigen), associated with cell-surface MHC Class I molecules and other membrane antigens. It also reacts with soluble beta 2 Microglobulin. beta 2 Microglobulin is a 12 kDa Ig like glycoprotein expressed on lymphocytes, thymocytes, monocytes, granulocytes, platelets, endothelial cells, and epithelial cells. It is absent on erythrocytes.
Applications:	Flow Cytometry, IP, WB, IHC-P, ICC, ELISA, RIA
Recommended Dilutions:	WB: 2-4 µg/ml, IHC-P: 10 µg/ml, Flow Cytometry: 1 µg/ml
Reactivity:	Human
Immunogen:	Purified human beta2-microglobulin.
Host:	Mouse
Clonality:	Monoclonal
Clone ID:	B2M-01
Isotype:	IgG2a
Conjugate:	Unconjugated
Purification:	Protein A chromatography.
Concentration:	1 mg/ml
Purity:	> 95% (by SDS-PAGE).
Product Form:	Liquid
Formulation:	Supplied in Phosphate Buffered Saline, pH 7.4, with 15 mM Sodium Azide.
Storage:	Shipped at 4°C. Upon delivery aliquot and store at -20°C. Avoid freeze / thaw cycles.
Disclaimer:	This product is for research use only. It is not intended for diagnostic or therapeutic use.

Anti-beta 2 Microglobulin Antibody [B2M-01] (A85545)

Images:



Western Blotting analysis (non-reducing conditions) of whole cell lysate of various cell lines using Anti-beta 2 Microglobulin Antibody (A85545). Lane 1: RAJI human Burkitt lymphoma cell line. Lane 2: EL4 mouse lymphoblastic lymphoma cell line. Lane 3: U937 human histiocytic lymphoma cell line.