

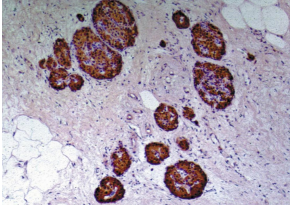
Anti-C Peptide Antibody [C-PEP-01] (A85562)

Specifications:

Name:	Anti-C Peptide Antibody [C-PEP-01]
Description:	Mouse monoclonal [C-PEP-01] antibody to C Peptide.
Specificity:	The antibody C-PEP-01 reacts specifically with C-peptide, a part of the Proinsulin molecule. Proinsulin consists of the three parts: C-peptide and two long strands of amino acids (alpha and beta chains; later become linked together to form the Insulin molecule). No cross-reactivity with Insulin or other peptide hormones or proteins was observed.
Applications:	ELISA, RIA, IHC-P, ICC
Recommended Dilutions:	IHC-P: 2-5 µg/ml
Reactivity:	Human
Immunogen:	Human C-peptide conjugated to bovine serum albumin.
Host:	Mouse
Clonality:	Monoclonal
Clone ID:	C-PEP-01
Isotype:	IgG1
Conjugate:	Unconjugated
Purification:	Protein A chromatography.
Concentration:	1 mg/ml
Purity:	> 95% (by SDS-PAGE).
Product Form:	Liquid
Formulation:	Supplied in Phosphate Buffered Saline, pH 7.4, with 15 mM Sodium Azide.
Storage:	Shipped at 4°C. Upon delivery aliquot and store at -20°C. Avoid freeze / thaw cycles.
Disclaimer:	This product is for research use only. It is not intended for diagnostic or therapeutic use.

Anti-C Peptide Antibody [C-PEP-01] (A85562)

Images:



Immunohistochemistry staining of human pancreas (paraffin-embedded sections) with Anti-C-peptide of Proinsulin Antibody (A85562).