

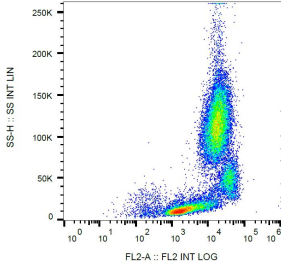
Anti-CD18 Antibody [MEM-148] (PE) (A85609)

Specifications:

Name:	Anti-CD18 Antibody [MEM-148] (PE)
Description:	Mouse monoclonal [MEM-148] antibody to CD18 (PE).
Specificity:	The antibody MEM-148 recognizes an epitope on CD18 which is essentially inaccessible in intact integrin molecules on resting leukocytes, but is exposed on high-affinity state of LFA-1 or on unassociated CD18. CD18 (integrin beta2 subunit; beta2 integrin) is a 90-95 kDa type I transmembrane protein expressed on all leukocytes.
Applications:	Flow Cytometry
Recommended Dilutions:	Flow Cytometry: This reagent is designed for analysis of human blood cells using 20 µl reagent / 100 µl of whole blood or 10 ⁶ cells in a suspension.
Reactivity:	Human
Immunogen:	Peripheral blood mononuclear cells.
Host:	Mouse
Clonality:	Monoclonal
Clone ID:	MEM-148
Isotype:	IgG1
Conjugate:	PE
Purification:	This antibody is conjugated with PE under optimum conditions. The conjugate is purified by size-exclusion chromatography.
Product Form:	Liquid
Formulation:	Supplied in Phosphate Buffered Saline with 15 mM Sodium Azide.
Storage:	Store in the dark at 2-8°C. Do not freeze!
Disclaimer:	This product is for research use only. It is not intended for diagnostic or therapeutic use.

Anti-CD18 Antibody [MEM-148] (PE) (A85609)

Images:



Surface staining of CD18 in human peripheral blood with Anti-CD18 Antibody (A85609).