

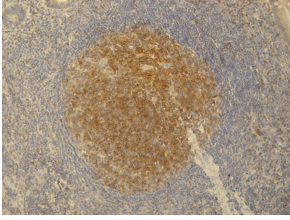
## Anti-PAG1 Antibody [PAG-C1] (A85668)

### Specifications:

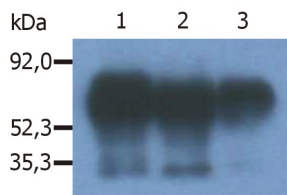
|                |  |
|----------------|--|
| Name:          | Anti-PAG1 Antibody [PAG-C1]  |
| Description:   | Mouse monoclonal [PAG-C1] antibody to PAG1.  |
| Specificity:   | The antibody PAG-C1 recognizes an epitope located in the C-terminal domain of Csk-binding protein (Cbp / PAG), a 46 kDa ubiquitously expressed transmembrane adaptor protein present in membrane rafts (glycosphingolipid-enriched microdomains), which however migrates on SDS PAGE gels anomalously as an 80 kDa molecule. |
| Applications:  | IP, WB, IHC-P  |
| Reactivity:    | Mouse, Human, Rat, Bovine  |
| Immunogen:     | C-terminal peptide (last 15 amino acids) of human Csk binding protein coupled to KLH.  |
| Host:          | Mouse  |
| Clonality:     | Monoclonal   |
| Clone ID:      | PAG-C1   |
| Isotype:       | IgG2b  |
| Conjugate:     | Unconjugated   |
| Purification:  | Protein A chromatography.  |
| Concentration: | 1 mg/ml  |
| Purity:        | > 95% (by SDS-PAGE).   |
| Product Form:  | Liquid   |
| Formulation:   | Supplied in Phosphate Buffered Saline, pH 7.4, with 15 mM Sodium Azide.  |
| Storage:       | Shipped at 4°C. Upon delivery aliquot and store at -20°C. Avoid freeze / thaw cycles.  |
| Disclaimer:    | This product is for research use only. It is not intended for diagnostic or therapeutic use.   |

## Anti-PAG1 Antibody [PAG-C1] (A85668)

### Images:



Immunohistochemistry staining (paraffin sections) of PAG/Cbp in germinal center of lymphatic follicle and in dispersed T cells in appendix tissue by Anti-PAG Antibody (A85668). Positive signal in T cells.



Immunoprecipitation of human PAG/Cbp from the lysate of RAJI human Burkitt lymphoma cell line. Western blot was immunostained with Anti-PAG Antibody (A86214). Note: PAG/Cbp is a 46 kDa adaptor protein, which however migrates on SDS PAGE gels anomalously as an 80 kDa molecule. Lane 1 & 2: Immunoprecipitation with Anti-PAG Antibody (A85668). Lane 3: Immunoprecipitation with Anti-PAG Antibody (polyclonal antibody).