

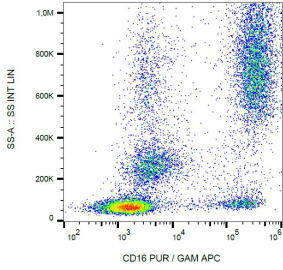
## Anti-CD16 Antibody [3G8] (A85703)

### Specifications:

Name:	Anti-CD16 Antibody [3G8]
Description:	Mouse monoclonal [3G8] antibody to CD16.
Specificity:	This antibody recognizes an extracellular epitope of CD16, a low affinity receptor for aggregated IgG (FcγRIII antigen). CD16 exists in two different isoforms: CD16a (FcγRIIIA, 50-65 kDa, expressed on NK-cells, monocytes, and macrophages) and CD16b (FcγRIIIB, 48 kDa, mainly expressed on neutrophils).
Applications:	Flow Cytometry, IP, IHC-Fr
Recommended Dilutions:	Flow Cytometry: 6 µg/ml
Reactivity:	Human, Non-Human Primates
Immunogen:	Human neutrophils.
Host:	Mouse
Clonality:	Monoclonal
Clone ID:	3G8
Isotype:	IgG1
Light Chains:	kappa
Conjugate:	Unconjugated
Purification:	Protein A chromatography.
Concentration:	1 mg/ml
Purity:	> 95% (by SDS-PAGE).
Product Form:	Liquid
Formulation:	Supplied in Phosphate Buffered Saline, pH 7.4, with 15 mM Sodium Azide.
Storage:	Shipped at 4°C. Upon delivery aliquot and store at -20°C. Avoid freeze / thaw cycles.
Disclaimer:	This product is for research use only. It is not intended for diagnostic or therapeutic use.

## Anti-CD16 Antibody [3G8] (A85703)

### Images:



Surface staining of CD16 in human peripheral blood with Anti-CD16 Antibody (A85703).