

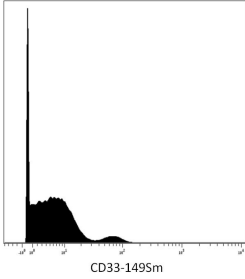
Anti-CD33 Antibody [WM53] (A85728)

Specifications:

Name:	Anti-CD33 Antibody [WM53]
Description:	Mouse monoclonal [WM53] antibody to CD33.
Specificity:	This antibody reacts with an extracellular epitope of CD33, a 67 kDa type I transmembrane glycoprotein of the immunoglobulin superfamily, expressed on myeloid progenitors, monocytes, granulocytes, dendritic cells, and mast cells. It is absent on platelets, lymphocytes, erythrocytes, and hematopoietic stem cells.
Applications:	Flow Cytometry, IP, WB, IHC-Fr, ICC, CyTOF
Recommended Dilutions:	Flow Cytometry: 1-4 µg/ml
Reactivity:	Human, Non-Human Primates
Immunogen:	Human AML cells.
Host:	Mouse
Clonality:	Monoclonal
Clone ID:	WM53
Isotype:	IgG1
Conjugate:	Unconjugated
Purification:	Protein A chromatography.
Concentration:	1 mg/ml
Purity:	> 95% (by SDS-PAGE).
Product Form:	Liquid
Formulation:	Supplied in Phosphate Buffered Saline, pH 7.4, with 15 mM Sodium Azide.
Storage:	Shipped at 4°C. Upon delivery aliquot and store at -20°C. Avoid freeze / thaw cycles.
Disclaimer:	This product is for research use only. It is not intended for diagnostic or therapeutic use.

Anti-CD33 Antibody [WM53] (A85728)

Images:



Surface staining (mass cytometry) of human peripheral blood with Anti-CD33 Antibody (A85728). Gated on singlets.