

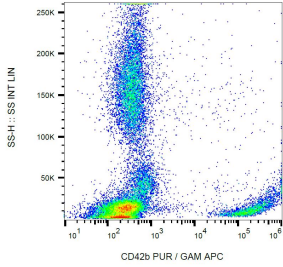
Anti-CD42b Antibody [HIP1] (A85789)

Specifications:

Name:	Anti-CD42b Antibody [HIP1]
Description:	Mouse monoclonal [HIP1] antibody to CD42b.
Specificity:	The antibody HIP1 reacts with CD42b (GPIb alpha), a 135-145 kDa membrane glycoprotein expressed on platelets and megakaryocytes. CD42b and CD42c (GPIb beta) are composed in a disulfide linked heterodimer (CD42b/c; 160 kDa); CD42b/c forms a noncovalent complex with CD42a and CD42d.
Applications:	Flow Cytometry, IHC-Fr
Recommended Dilutions:	Flow Cytometry: 1-4 µg/ml
Reactivity:	Human, Non-Human Primates
Immunogen:	Peripheral blood mononuclear cells of a patient suffering with CLL.
Host:	Mouse
Clonality:	Monoclonal
Clone ID:	HIP1
Isotype:	IgG1
Conjugate:	Unconjugated
Purification:	Protein A chromatography.
Concentration:	1 mg/ml
Purity:	> 95% (by SDS-PAGE).
Product Form:	Liquid
Formulation:	Supplied in Phosphate Buffered Saline, pH 7.4, with 15 mM Sodium Azide.
Storage:	Shipped at 4°C. Upon delivery aliquot and store at -20°C. Avoid freeze / thaw cycles.
Disclaimer:	This product is for research use only. It is not intended for diagnostic or therapeutic use.

Anti-CD42b Antibody [HIP1] (A85789)

Images:



Surface staining of human peripheral blood with Anti-CD42b Antibody (A85789).