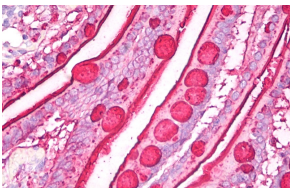


Anti-Blood Group Lewis b Antibody [2-25LE] (A85997)

Specifications:

Name:	Anti-Blood Group Lewis b Antibody [2-25LE]
Description:	Mouse monoclonal [2-25LE] antibody to Blood Group Lewis b .
Specificity:	This antibody reacts with Lewisb blood group antigen, a carbohydrate determinant carried on both glycolipids and glycoproteins, detected on erythrocytes, certain epithelial cells, and in secretions of certain individuals.
Applications:	IHC-P, WB, ELISA
Recommended Dilutions:	IHC-P: 5-10 µg/ml
Reactivity:	Human
Immunogen:	Mucin isolated by size exclusion chromatography from an ovarian cyst fluid (pure endocervical type according to the Fenoglio's classification).
Host:	Mouse
Clonality:	Monoclonal
Clone ID:	2-25LE
Isotype:	IgG1
Conjugate:	Unconjugated
Purification:	Protein A chromatography.
Concentration:	1 mg/ml
Purity:	> 95% (by SDS-PAGE).
Product Form:	Liquid
Formulation:	Supplied in Phosphate Buffered Saline, pH 7.4, with 15 mM Sodium Azide.
Storage:	Shipped at 4°C. Upon delivery aliquot and store at -20°C. Avoid freeze / thaw cycles.
Disclaimer:	This product is for research use only. It is not intended for diagnostic or therapeutic use.

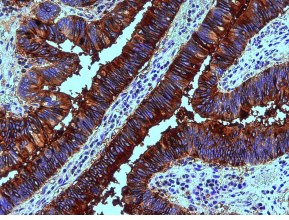
Images:



Immunohistochemistry staining of human small intestine (paraffin sections) using Anti-Blood Group Lewis b Antibody (A85997).

Anti-Blood Group Lewis b Antibody [2-25LE] (A85997)

Images continued:



Immunohistochemistry staining of human colon adenocarcinoma (paraffin sections) using Anti-Blood Group Lewis b Antibody (A85997).