

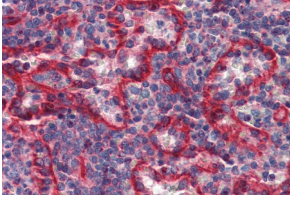
## Anti-HLA E Antibody [MEM-E/07] (A86034)

### Specifications:

Name:	Anti-HLA E Antibody [MEM-E/07]
Description:	Mouse monoclonal [MEM-E/07] antibody to HLA E.
Specificity:	The antibody MEM-E/07 recognized native surface-expressed HLA-E, but not denatured heavy chain of HLA-E. HLA-E belongs to the MHC Class I molecules (MHC Class Ib; nonclassical) and it is expressed on many types of the human cells.
Applications:	Flow Cytometry, IP, IHC-P
Recommended Dilutions:	IHC-P: 10 µg/ml, Flow Cytometry: 1-4 µg/ml
Reactivity:	Human
Immunogen:	Bacterially expressed recombinant HLA-E refolded with beta2-microglobulin and peptide.
Host:	Mouse
Clonality:	Monoclonal
Clone ID:	MEM-E/07
Isotype:	IgG1
Conjugate:	Unconjugated
Purification:	Protein A chromatography.
Concentration:	1 mg/ml
Purity:	> 95% (by SDS-PAGE).
Product Form:	Liquid
Formulation:	Supplied in Phosphate Buffered Saline, pH 7.4, with 15 mM Sodium Azide.
Storage:	Shipped at 4°C. Upon delivery aliquot and store at -20°C. Avoid freeze / thaw cycles.
Disclaimer:	This product is for research use only. It is not intended for diagnostic or therapeutic use.

## Anti-HLA E Antibody [MEM-E/07] (A86034)

Images:



Immunohistochemistry staining of human spleen (paraffin sections) with Anti-HLA E Antibody (A86034).