

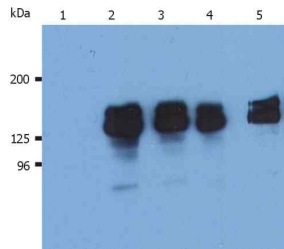
Anti-SHIP1 Antibody [SHIP-01] (A86106)

Specifications:

Name:	Anti-SHIP1 Antibody [SHIP-01]
Description:	Mouse monoclonal [SHIP-01] antibody to SHIP1.
Specificity:	The antibody SHIP-01 reacts with SHIP-1, a phosphoinositide phosphatase largely confined to hematopoietic cells. Multiple forms of SHIP-1 have been reported with molecular weights of 110, 125, 130, 135 and 145 kDa.
Applications:	Flow Cytometry, WB
Recommended Dilutions:	Flow Cytometry: 2-5 µg/ml
Reactivity:	Human
Immunogen:	Peptide corresponding to a sequence within N-terminal domain of Human SHIP-1.
Host:	Mouse
Clonality:	Monoclonal
Clone ID:	SHIP-01
Isotype:	IgG2a
Conjugate:	Unconjugated
Purification:	Protein A chromatography.
Concentration:	1 mg/ml
Purity:	> 95% (by SDS-PAGE).
Product Form:	Liquid
Formulation:	Supplied in Phosphate Buffered Saline, pH 7.4, with 15 mM Sodium Azide.
Storage:	Shipped at 4°C. Upon delivery aliquot and store at -20°C. Avoid freeze / thaw cycles.
Disclaimer:	This product is for research use only. It is not intended for diagnostic or therapeutic use.

Anti-SHIP1 Antibody [SHIP-01] (A86106)

Images:



Western Blotting analysis (reducing conditions) of human SHIP-1 in whole cell lysate of THP-1 human acute monocytic leukemia cell line. Lane 1: Immunostaining with Isotype mouse IgG1 control (PPV-04). Lane 2,3: Immunostaining with Anti-SHIP-1 Antibody (A86106). Lane 4,5: Immunostaining with Anti-SHIP-1 Antibody (A86107).