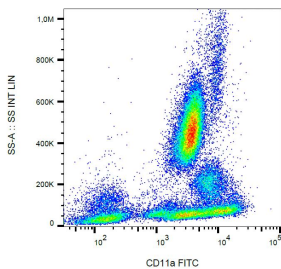


Anti-CD11a Antibody [MEM-25] (FITC) (A86121)

Specifications:

Name:	Anti-CD11a Antibody [MEM-25] (FITC)
Description:	Mouse monoclonal [MEM-25] antibody to CD11a (FITC).
Specificity:	This antibody recognizes an extracellular epitope of CD11a, a 170-180 kDa type I transmembrane glycoprotein expressed on B and T lymphocytes, monocytes, macrophages, neutrophils, basophils, and eosinophils.
Applications:	Flow Cytometry
Recommended Dilutions:	Flow Cytometry: This reagent is designed for analysis of human blood cells using 20 μ l reagent / 100 μ l of whole blood or 10^6 cells in a suspension.
Reactivity:	Human
Immunogen:	Leukocytes from a patient suffering from a LGL Type leukemia.
Host:	Mouse
Clonality:	Monoclonal
Clone ID:	MEM-25
Isotype:	IgG1
Conjugate:	FITC
Purification:	This antibody is conjugated with FITC under optimum conditions. The conjugate is purified by size-exclusion chromatography.
Product Form:	Liquid
Formulation:	Supplied in Phosphate Buffered Saline with 15 mM Sodium Azide.
Storage:	Store in the dark at 2-8°C. Do not freeze!
Disclaimer:	This product is for research use only. It is not intended for diagnostic or therapeutic use.

Images:



Surface staining of human peripheral blood cells with Anti-CD11a Antibody (A86121).