

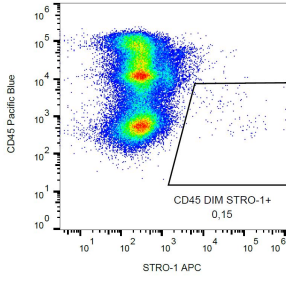
## Anti-STRO-1 Antibody [STRO-1] (APC) (A86135)

### Specifications:

Name:	Anti-STRO-1 Antibody [STRO-1] (APC)
Description:	Mouse monoclonal [STRO-1] antibody to STRO-1 (APC).
Specificity:	The mouse monoclonal antibody STRO-1 recognizes the cell surface antigen STRO-1 expressed by bone marrow mesenchymal stromal cells and nucleated erythroid precursors, but not by committed hematopoietic progenitors.
Applications:	Flow Cytometry
Recommended Dilutions:	Flow Cytometry: 1-5 µg/ml
Reactivity:	Human
Immunogen:	Human CD34 positive bone marrow cells.
Host:	Mouse
Clonality:	Monoclonal
Clone ID:	STRO-1
Isotype:	IgM
Light Chains:	lambda
Conjugate:	APC
Purification:	This antibody is conjugated with APC under optimum conditions. The conjugate is purified by size-exclusion chromatography.
Concentration:	0.1 mg/ml
Product Form:	Liquid
Formulation:	Supplied in Tris Buffered Saline with 15 mM Sodium Azide.
Storage:	Store in the dark at 2-8°C. Do not freeze!
Disclaimer:	This product is for research use only. It is not intended for diagnostic or therapeutic use.

## Anti-STRO-1 Antibody [STRO-1] (APC) (A86135)

Images:



Surface staining of human peripheral blood with Anti-STRO-1 Antibody (A86135).