

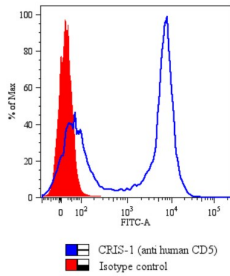
Anti-CD5 Antibody [CRIS1] (A86153)

Specifications:

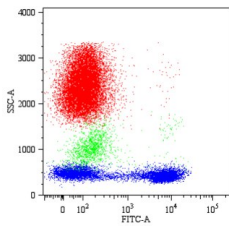
Name:	Anti-CD5 Antibody [CRIS1]
Description:	Mouse monoclonal [CRIS1] antibody to CD5.
Specificity:	This antibody recognizes an extracellular epitope of CD5, a 67 kDa single-chain transmembrane glycoprotein expressed on mature T lymphocytes, most of thymocytes and B lymphocytes subset (B-1a lymphocytes).
Applications:	Flow Cytometry, IP, WB, IHC-Fr, ELISA
Recommended Dilutions:	Flow Cytometry: 1 µg/ml, WB: 1-2 µg/ml
Reactivity:	Human
Immunogen:	Stimulated human leukocytes.
Host:	Mouse
Clonality:	Monoclonal
Clone ID:	CRIS1
Isotype:	IgG2a
Conjugate:	Unconjugated
Purification:	Protein A chromatography.
Concentration:	1 mg/ml
Purity:	> 95% (by SDS-PAGE).
Product Form:	Liquid
Formulation:	Supplied in Phosphate Buffered Saline, pH 7.4, with 15 mM Sodium Azide.
Storage:	Shipped at 4°C. Upon delivery aliquot and store at -20°C. Avoid freeze / thaw cycles.
Disclaimer:	This product is for research use only. It is not intended for diagnostic or therapeutic use.

Anti-CD5 Antibody [CRIS1] (A86153)

Images:



Flow Cytometry analysis of human Peripheral Blood Lymphocytes (PBL) stained with Anti-CD5 Antibody (A86153 | 1 $\mu\text{g/ml}$). Histogram - gated on lymphocytes, overlay with mouse IgG2a isotype control.



Flow Cytometry analysis of human Peripheral Blood Lymphocytes (PBL) stained with Anti-CD5 Antibody (A86153 | 1 $\mu\text{g/ml}$).