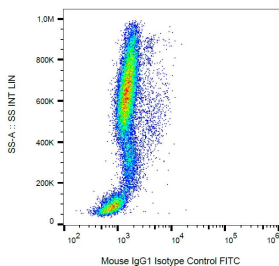


Mouse IgG1 [MOPC-21] (FITC) (A86205)

Specifications:

Name:	Mouse IgG1 [MOPC-21] (FITC)
Description:	Mouse IgG1 [MOPC-21] (FITC) - Isotype Control
Specificity:	This antibody reacts with an unknown epitope. It does not react with a variety of resting, activated, live, and fixed rat and human tissues.
Applications:	Flow Cytometry, Isotype Control
Recommended Dilutions:	Isotype Control: Use the same concentration of this isotype control as the working concentration of the primary antibody.
Host:	Mouse
Clonality:	Monoclonal
Clone ID:	MOPC-21
Isotype:	IgG1
Light Chains:	kappa
Conjugate:	FITC
Purification:	This antibody is conjugated with FITC under optimum conditions. The conjugate is purified by size-exclusion chromatography.
Concentration:	1 mg/ml
Product Form:	Liquid
Formulation:	Supplied in Phosphate Buffered Saline, pH 7.4, with 15 mM Sodium Azide.
Storage:	Store in the dark at 2-8°C. Do not freeze!
Disclaimer:	This product is for research use only. It is not intended for diagnostic or therapeutic use.

Images:



Example of non-specific Mouse IgG1 (A86205) signal on human peripheral blood; surface staining, 9 µg/ml.