

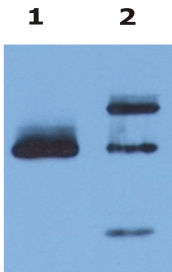
Anti-HLA G Antibody [MEM-G/9] (A86211)

Specifications:

Name:	Anti-HLA G Antibody [MEM-G/9]
Description:	Mouse monoclonal [MEM-G/9] antibody to HLA G.
Specificity:	The antibody MEM-G/9 reacts with native form of human HLA-G1 on the cell surface as well as with soluble HLA-G5 isoform in its beta2-microglobulin associated form. Reactivity with HLA-G3 was also reported.
Applications:	Flow Cytometry, IP, IHC-Fr, ICC, ELISA
Recommended Dilutions:	Flow Cytometry: 1-4 µg/ml, ICC: 2-5 µg/ml
Reactivity:	Human
Immunogen:	Recombinant human HLA-G refolded with beta2-microglobulin and peptide.
Host:	Mouse
Clonality:	Monoclonal
Clone ID:	MEM-G/9
Isotype:	IgG1
Conjugate:	Unconjugated
Purification:	Protein A chromatography.
Concentration:	1 mg/ml
Purity:	> 95% (by SDS-PAGE).
Product Form:	Liquid
Formulation:	Supplied in Phosphate Buffered Saline, pH 7.4, with 15 mM Sodium Azide.
Storage:	Shipped at 4°C. Upon delivery aliquot and store at -20°C. Avoid freeze / thaw cycles.
Disclaimer:	This product is for research use only. It is not intended for diagnostic or therapeutic use.

Anti-HLA G Antibody [MEM-G/9] (A86211)

Images:



Immunoprecipitation of HLA-G from HLA-G1 transfectants (LCL-HLA-G1) by Anti-HLA G Antibody (A86211) and protein G. HLA-G was detected by Anti-HLA-G Antibody [4H84] and Goat Anti-Mouse IgG Antibody (HRP) in cell lysate (Lane 1) and in the immunoprecipitate (Lane 2).