

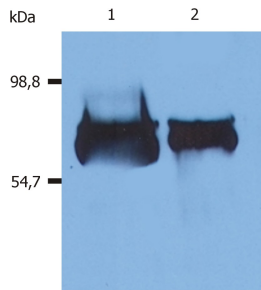
Anti-Albumin Antibody [AL-01] (A86266)

Specifications:

Name:	Anti-Albumin Antibody [AL-01]
Description:	Mouse monoclonal [AL-01] antibody to Albumin.
Specificity:	The antibody AL-01 reacts only with human serum albumin, a 65-67 kDa monomeric protein in human blood plasma; it is produced in liver. No cross-reactivity was observed with other serum proteins.
Applications:	IHC-P, ELISA, RIA, WB
Recommended Dilutions:	IHC-P: 5 µg/ml
Reactivity:	Human
Immunogen:	Fraction of proteins containing albumin after ammonium sulphate precipitation and DEAE-chromatography of human serum.
Host:	Mouse
Clonality:	Monoclonal
Clone ID:	AL-01
Isotype:	IgG1
Conjugate:	Unconjugated
Purification:	Protein A chromatography.
Concentration:	1 mg/ml
Purity:	> 95% (by SDS-PAGE).
Product Form:	Liquid
Formulation:	Supplied in Phosphate Buffered Saline, pH 7.4, with 15 mM Sodium Azide.
Storage:	Shipped at 4°C. Upon delivery aliquot and store at -20°C. Avoid freeze / thaw cycles.
Disclaimer:	This product is for research use only. It is not intended for diagnostic or therapeutic use.

Anti-Albumin Antibody [AL-01] (A86266)

Images:



Western Blotting analysis (reducing conditions) of human serum albumin using Anti-Albumin Antibody (A86266). Lane 1: Human blood plasma. Lane 2: Human blood serum.