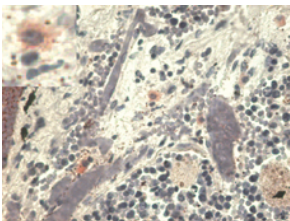


Anti-HLA G Antibody [MEM-G/1] (A86276)

Specifications:

Name:	Anti-HLA G Antibody [MEM-G/1]
Description:	Mouse monoclonal [MEM-G/1] antibody to HLA G.
Specificity:	The antibody MEM-G/1 reacts with denatured HLA-G heavy chain. HLA-G belongs to the MHC Class I molecules (MHC Class Ib; nonclassical) and it is expressed on the surface of trophoblast cells.
Applications:	WB, IHC-P, IHC-Fr
Recommended Dilutions:	IHC-P: 1:60 to 1:100, WB: 1-2 µg/ml
Reactivity:	Human
Immunogen:	Denatured bacterially expressed recombinant human HLA-G heavy chain.
Host:	Mouse
Clonality:	Monoclonal
Clone ID:	MEM-G/1
Isotype:	IgG1
Conjugate:	Unconjugated
Purification:	Protein A chromatography.
Concentration:	1 mg/ml
Purity:	> 95% (by SDS-PAGE).
Product Form:	Liquid
Formulation:	Supplied in Phosphate Buffered Saline, pH 7.4, with 15 mM Sodium Azide.
Storage:	Shipped at 4°C. Upon delivery aliquot and store at -20°C. Avoid freeze / thaw cycles.
Disclaimer:	This product is for research use only. It is not intended for diagnostic or therapeutic use.

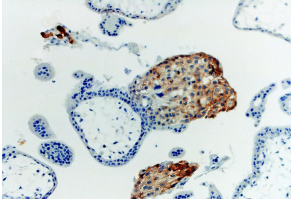
Images:



Immunohistochemistry staining with Anti-HLA G Antibody (A86276) - pulmonary diseases (paraffin-embedded sections). Anti-HLA G Antibody (A86276) stains infiltrating macrophages in pulmonary diseases. In the top left corner see the detail of macrophage.

Anti-HLA G Antibody [MEM-G/1] (A86276)

Images continued:



Immunohistochemistry staining with Anti-HLA G Antibody (A86276) of first trimester placenta (paraffin-embedded sections).