

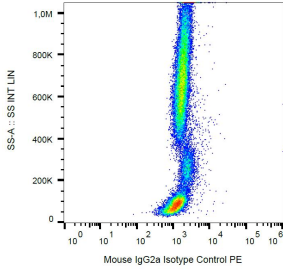
## Mouse IgG2a [MOPC-173] (PE) (A86304)

### Specifications:

Name:	Mouse IgG2a [MOPC-173] (PE)
Description:	Mouse IgG2a [MOPC-173] (PE) - Isotype Control
Specificity:	This antibody reacts with an unknown epitope. It does not react with a variety of resting, activated, live, and fixed mouse, rat, and human tissues.
Applications:	Flow Cytometry, Isotype Control
Recommended Dilutions:	Isotype Control: Use the same concentration of this isotype control as the working concentration of the primary antibody.
Immunogen:	The transplantable plasmacytoma MOPC-173 was induced by intraperitoneal injection of mineral oils into BALB/c mice.
Host:	Mouse
Clonality:	Monoclonal
Clone ID:	MOPC-173
Isotype:	IgG2a
Light Chains:	kappa
Conjugate:	PE
Purification:	This antibody is conjugated with PE under optimum conditions. The conjugate is purified by size-exclusion chromatography.
Concentration:	0.1 mg/ml
Product Form:	Liquid
Formulation:	Supplied in Phosphate Buffered Saline with 15 mM Sodium Azide.
Storage:	Store in the dark at 2-8°C. Do not freeze!
Disclaimer:	This product is for research use only. It is not intended for diagnostic or therapeutic use.

## Mouse IgG2a [MOPC-173] (PE) (A86304)

### Images:



Example of non-specific Mouse IgG2a (A86304) signal on human peripheral blood; surface staining, 9 µg/ml.