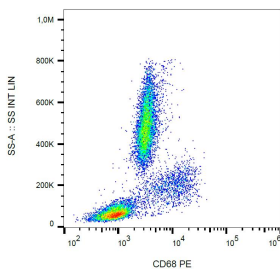


Anti-CD68 Antibody [Y1/82A] (PE) (A86313)

Specifications:

Name:	Anti-CD68 Antibody [Y1/82A] (PE)
Description:	Mouse monoclonal [Y1/82A] antibody to CD68 (PE).
Specificity:	The mouse monoclonal antibody Y1/82A recognizes CD68 (LAMP4), a 110 kDa glycoprotein expressed mainly in cytoplasmic granules of monocytes/macrophages, granulocytes, and dendritic cells.
Applications:	Flow Cytometry
Recommended Dilutions:	Flow Cytometry: This reagent is designed for analysis of human blood cells using 10 μ l reagent / 100 μ l of whole blood or 10 ⁶ cells in a suspension.
Reactivity:	Human
Immunogen:	Lysosomal contents of lung macrophages.
Host:	Mouse
Clonality:	Monoclonal
Clone ID:	Y1/82A
Isotype:	IgG2b
Conjugate:	PE
Purification:	This antibody is conjugated with PE under optimum conditions. The conjugate is purified by size-exclusion chromatography.
Product Form:	Liquid
Formulation:	Supplied in Phosphate Buffered Saline with 15 mM Sodium Azide.
Storage:	Store in the dark at 2-8°C. Do not freeze!
Disclaimer:	This product is for research use only. It is not intended for diagnostic or therapeutic use.

Images:



Intracellular staining of human peripheral blood cells with Anti-CD68 Antibody (A86313).