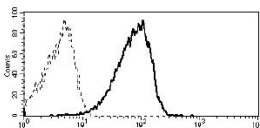


## Anti-CD361 Antibody [MEM-216] (A86364)

### Specifications:

|                        |   |
|------------------------|---|
| Name:                  | Anti-CD361 Antibody [MEM-216]   |
| Description:           | Mouse monoclonal [MEM-216] antibody to CD361.   |
| Specificity:           | The mouse monoclonal antibody MEM-216 recognizes CD361 / EVI2B, almost uncharacterized type I transmembrane protein with broad leukocyte expression, mostly in myeloid and B cells. |
| Applications:          | Flow Cytometry, IP  |
| Recommended Dilutions: | Flow Cytometry: 1-4 µg/ml   |
| Reactivity:            | Human   |
| Immunogen:             | Raji cells.   |
| Host:                  | Mouse   |
| Clonality:             | Monoclonal  |
| Clone ID:              | MEM-216   |
| Isotype:               | IgG1  |
| Light Chains:          | kappa   |
| Conjugate:             | Unconjugated  |
| Purification:          | Protein A chromatography.   |
| Concentration:         | 1 mg/ml   |
| Purity:                | > 95% (by SDS-PAGE).  |
| Product Form:          | Liquid  |
| Formulation:           | Supplied in Phosphate Buffered Saline, pH 7.4, with 15 mM Sodium Azide.   |
| Storage:               | Shipped at 4°C. Upon delivery aliquot and store at -20°C. Avoid freeze / thaw cycles.   |
| Disclaimer:            | This product is for research use only. It is not intended for diagnostic or therapeutic use.  |

### Images:



Flow cytometry analysis of CD19+ peripheral blood leukocytes using Anti-CD361 Antibody (A86364).