

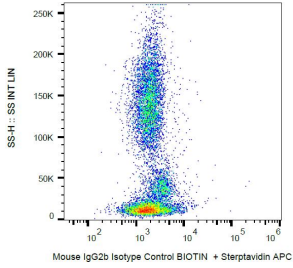
## Mouse IgG2b [MPC-11] (Biotin) (A86393)

### Specifications:

Name:	Mouse IgG2b [MPC-11] (Biotin)
Description:	Mouse IgG2b [MPC-11] (Biotin) - Isotype Control
Specificity:	This mouse IgG2b (kappa) monoclonal antibody (clone MPC-11) reacts with an epitope irrelevant for a variety of resting, activated, live, and fixed human, mouse, and rat tissues.
Applications:	Flow Cytometry, Isotype Control
Recommended Dilutions:	Isotype Control: Use the same concentration of this isotype control as the working concentration of the primary antibody.
Immunogen:	KLH-coupled trinitrophenol.
Host:	Mouse
Clonality:	Monoclonal
Clone ID:	MPC-11
Isotype:	IgG2b
Light Chains:	kappa
Conjugate:	Biotin
Purification:	This antibody is conjugated with Biotin-LC-NHS under optimum conditions. The reagent is free of unconjugated Biotin.
Concentration:	1 mg/ml
Product Form:	Liquid
Formulation:	Supplied in Phosphate Buffered Saline, pH 7.4, with 15 mM Sodium Azide.
Storage:	Store at 2-8°C. Do not freeze!
Disclaimer:	This product is for research use only. It is not intended for diagnostic or therapeutic use.

## Mouse IgG2b [MPC-11] (Biotin) (A86393)

### Images:



Example of non-specific Mouse IgG2b (A86393) signal on human peripheral blood; surface staining, 16 µg/ml.