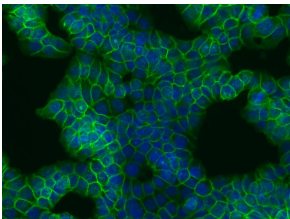


Anti-beta Catenin Antibody [EM-22] (A86465)

Specifications:

Name:	Anti-beta Catenin Antibody [EM-22]
Description:	Mouse monoclonal [EM-22] antibody to beta Catenin.
Specificity:	The antibody EM-22 reacts with C-terminal part of beta-catenin, an 88 kDa multifunctional protein involved both in cell adhesion and in activation of transcription.
Applications:	Flow Cytometry, IP, WB, ICC
Recommended Dilutions:	Flow Cytometry: 1-4 µg/ml
Reactivity:	Human, Mouse, Hamster
Immunogen:	Recombinant human beta-catenin.
Host:	Mouse
Clonality:	Monoclonal
Clone ID:	EM-22
Isotype:	IgG1
Conjugate:	Unconjugated
Purification:	Protein A chromatography.
Concentration:	1 mg/ml
Purity:	> 95% (by SDS-PAGE).
Product Form:	Liquid
Formulation:	Supplied in Phosphate Buffered Saline, pH 7.4, with 15 mM Sodium Azide.
Storage:	Shipped at 4°C. Upon delivery aliquot and store at -20°C. Avoid freeze / thaw cycles.
Disclaimer:	This product is for research use only. It is not intended for diagnostic or therapeutic use.

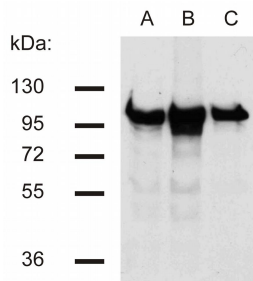
Images:



Immunocytochemistry staining of beta-catenin in human colon adenocarcinoma cell line HT29 using Anti-beta Catenin Antibody (A86465 | green). Cell nuclei visualized by DAPI (blue).

Anti-beta Catenin Antibody [EM-22] (A86465)

Images continued:



Western blotting analysis of beta-catenin in murine 3T3 (A), C57 (B) and KW1 (C) cell lines using Anti-beta Catenin Antibody (A86465).