

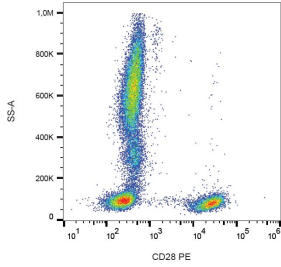
Anti-CD28 Antibody [CD28.2] (PE) (A86490)

Specifications:

Name:	Anti-CD28 Antibody [CD28.2] (PE)
Description:	Mouse monoclonal [CD28.2] antibody to CD28 (PE).
Specificity:	This antibody recognizes an extracellular epitope of CD28, a disulfide-linked homodimeric type I glycoprotein (monomer of MW 44 kDa) which is a critical costimulatory receptor of T cells.
Applications:	Flow Cytometry
Recommended Dilutions:	Flow Cytometry: This reagent is designed for analysis of human blood cells using 20 µl reagent / 100 µl of whole blood or 10 ⁶ cells in a suspension.
Reactivity:	Human, Non-Human Primates
Immunogen:	DC28.1.3.3 murine T cell hybridoma transfected with human CD28 cDNA.
Host:	Mouse
Clonality:	Monoclonal
Clone ID:	CD28.2
Isotype:	IgG1
Light Chains:	kappa
Conjugate:	PE
Purification:	This antibody is conjugated with PE under optimum conditions. The conjugate is purified by size-exclusion chromatography.
Product Form:	Liquid
Formulation:	Supplied in Phosphate Buffered Saline with 15 mM Sodium Azide.
Storage:	Store in the dark at 2-8°C. Do not freeze!
Disclaimer:	This product is for research use only. It is not intended for diagnostic or therapeutic use.

Anti-CD28 Antibody [CD28.2] (PE) (A86490)

Images:



Surface staining of human peripheral blood leukocytes with Anti-CD28 Antibody (A86490).