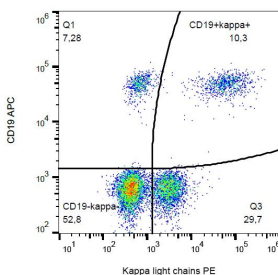


Anti-Human Kappa Light Chain Antibody [TB28-2] (PE) (A86591)

Specifications:

Name:	Anti-Human Kappa Light Chain Antibody [TB28-2] (PE)
Description:	Mouse monoclonal [TB28-2] antibody to Human Kappa Light Chain (PE).
Specificity:	This antibody recognizes human Ig kappa light chains of both secreted and cell surface immunoglobulin. It also detects free kappa light chains.
Applications:	Flow Cytometry
Recommended Dilutions:	Flow Cytometry: This reagent is designed for analysis of human blood cells using 10 µl reagent / 100 µl of whole blood or 10 ⁶ cells in a suspension.
Reactivity:	Human
Immunogen:	Human IgG-kappa myeloma protein.
Host:	Mouse
Clonality:	Monoclonal
Clone ID:	TB28-2
Isotype:	IgG1
Light Chains:	kappa
Conjugate:	PE
Purification:	This antibody is conjugated with PE under optimum conditions. The conjugate is purified by size-exclusion chromatography.
Product Form:	Liquid
Formulation:	Supplied in Phosphate Buffered Saline with 15 mM Sodium Azide.
Storage:	Store in the dark at 2-8°C. Do not freeze!
Disclaimer:	This product is for research use only. It is not intended for diagnostic or therapeutic use.

Images:



Surface staining of kappa light chains in human peripheral blood cells with Anti-Kappa Light Chain Antibody (A86591).