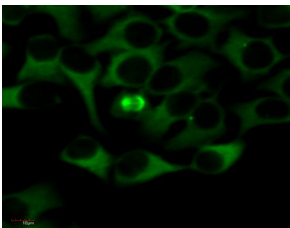


## Anti-alpha Tubulin Antibody [TU-01] (FITC) (A86729)

### Specifications:

Name:	Anti-alpha Tubulin Antibody [TU-01] (FITC)
Description:	Mouse monoclonal [TU-01] antibody to alpha Tubulin (FITC).
Specificity:	The antibody TU-01 recognizes the defined epitope (aa 65-97) on N-terminal structural domain of alpha-tubulin.
Applications:	Flow Cytometry, ICC
Recommended Dilutions:	Flow Cytometry: 1-4 µg/ml
Reactivity:	Human, Mouse, Bovine, Canine, Porcine
Immunogen:	Fraction of tubulin purified from porcine brain by two cycles of polymerization - depolymerization.
Host:	Mouse
Clonality:	Monoclonal
Clone ID:	TU-01
Isotype:	IgG1
Conjugate:	FITC
Purification:	This antibody is conjugated with FITC under optimum conditions. The conjugate is purified by size-exclusion chromatography.
Concentration:	1 mg/ml
Product Form:	Liquid
Formulation:	Supplied in Phosphate Buffered Saline, pH 7.4, with 15 mM Sodium Azide.
Storage:	Store in the dark at 2-8°C. Do not freeze!
Disclaimer:	This product is for research use only. It is not intended for diagnostic or therapeutic use.

### Images:



Immunocytochemistry staining of alpha tubulin in HeLa cells using Anti-alpha Tubulin Antibody (A86729).