

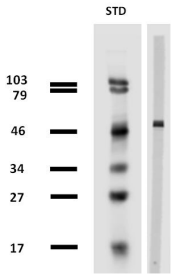
Anti-beta Tubulin Antibody [TU-13] (A86730)

Specifications:

Name:	Anti-beta Tubulin Antibody [TU-13]
Description:	Mouse monoclonal [TU-13] antibody to beta Tubulin.
Specificity:	The antibody TU-13 recognizes an epitope on N-terminal structural domain of beta-tubulin in various species.
Applications:	WB, IHC-Fr, ICC
Recommended Dilutions:	WB: 1-2 µg/ml
Reactivity:	Human, Porcine, Mouse, Plants
Immunogen:	Beta Tubulin from porcine brain.
Host:	Mouse
Clonality:	Monoclonal
Clone ID:	TU-13
Isotype:	IgM
Conjugate:	Unconjugated
Purification:	Purified by precipitation and chromatography.
Concentration:	1 mg/ml
Purity:	> 95% (by SDS-PAGE).
Product Form:	Liquid
Formulation:	Supplied in Tris Buffered Saline, pH 8.0, with 15 mM Sodium Azide.
Storage:	Shipped at 4°C. Upon delivery aliquot and store at -20°C. Avoid freeze / thaw cycles.
Disclaimer:	This product is for research use only. It is not intended for diagnostic or therapeutic use.

Anti-beta Tubulin Antibody [TU-13] (A86730)

Images:



Western blotting analysis of porcine brain lysate using Anti-beta Tubulin Antibody (A86730).