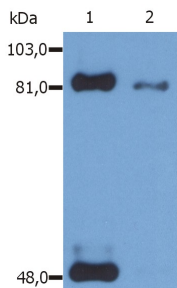


Anti-STAT1 (phospho Ser727) Antibody [PSM1] (A86741)

Specifications:

Name:	Anti-STAT1 (phospho Ser727) Antibody [PSM1]
Description:	Mouse monoclonal [PSM1] antibody to STAT1 (phospho Ser727).
Specificity:	The antibody PSM1 recognizes transcriptional factor STAT1 (91 kDa) activated by phosphorylation at Ser727.
Applications:	IP, WB
Reactivity:	Human
Immunogen:	STAT1 peptide sequence 721-733 (Ser727 phosphorylated).
Host:	Mouse
Clonality:	Monoclonal
Clone ID:	PSM1
Isotype:	IgG1
Conjugate:	Unconjugated
Purification:	Protein A chromatography.
Concentration:	1 mg/ml
Purity:	> 95% (by SDS-PAGE).
Product Form:	Liquid
Formulation:	Supplied in Phosphate Buffered Saline, pH 7.4, with 15 mM Sodium Azide.
Storage:	Shipped at 4°C. Upon delivery aliquot and store at -20°C. Avoid freeze / thaw cycles.
Disclaimer:	This product is for research use only. It is not intended for diagnostic or therapeutic use.

Images:



Western Blotting analysis (reducing conditions) of phosphorylated STAT1 (Ser727) in IFN-gamma treated HeLa human cervix carcinoma cell line using Anti-STAT1 (Phospho-Ser727) Antibody (A86741). Lane 1: Immunoprecipitated material by Anti-STAT1 Antibody [SM2]. Lane 2: Original whole cell lysate.