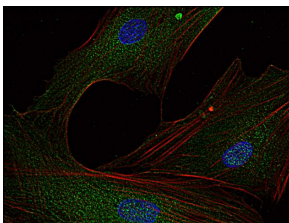


## Anti-FYN Antibody [FYN-01] (A86767)

### Specifications:

Name:	Anti-FYN Antibody [FYN-01]
Description:	Mouse monoclonal [FYN-01] antibody to FYN.
Specificity:	The antibody FYN-01 reacts with Fyn, a 59 kDa non-receptor Src-family protein tyrosine kinase.
Applications:	IP, WB, IHC-P, ICC
Recommended Dilutions:	IHC-P: 5 µg/ml, WB: 2 µg/ml
Reactivity:	Mouse, Human
Immunogen:	Bacterially expressed recombinant fragment of human Fyn (aa 7-176).
Host:	Mouse
Clonality:	Monoclonal
Clone ID:	FYN-01
Isotype:	IgG2b
Conjugate:	Unconjugated
Purification:	Protein A chromatography.
Concentration:	1 mg/ml
Purity:	> 95% (by SDS-PAGE).
Product Form:	Liquid
Formulation:	Supplied in Phosphate Buffered Saline, pH 7.4, with 15 mM Sodium Azide.
Storage:	Shipped at 4°C. Upon delivery aliquot and store at -20°C. Avoid freeze / thaw cycles.
Disclaimer:	This product is for research use only. It is not intended for diagnostic or therapeutic use.

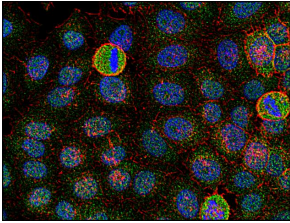
### Images:



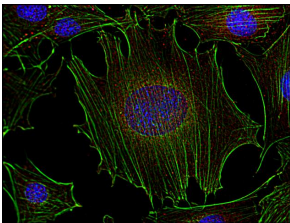
Immunofluorescence staining of Fyn in human primary fibroblasts using Anti-Fyn Antibody (A86767 | green). Actin cytoskeleton was decorated by phalloidin (red) and cell nuclei stained with DAPI (blue). Primary antibody: 5 µg/ml.

## Anti-FYN Antibody [FYN-01] (A86767)

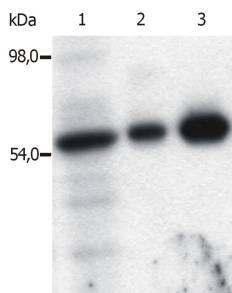
Images continued:



Immunofluorescence staining of Fyn in human HeLa cell line using Anti-Fyn Antibody (A86767 | green). Actin cytoskeleton was decorated by phalloidin (red) and cell nuclei stained with DAPI (blue).



Immunofluorescence staining of Fyn in murine transformed fibroblasts using Anti-Fyn Antibody (A86767 | red). Actin cytoskeleton was decorated by phalloidin (green) and cell nuclei stained with DAPI (blue).



Immunoprecipitation of Fyn from the lysate of T cells isolated from fresh buffy coats. Western blot was immunostained with Anti-Fyn Antibody (A86767). Lane 1: Original lysate of T cells. Lane 2-3: Immunoprecipitated material eluted from affinity sorbent (FYN-01 coupled to Sepharose beads). Lanes differ in amount of T cell lysate loaded on the immunosorbent.