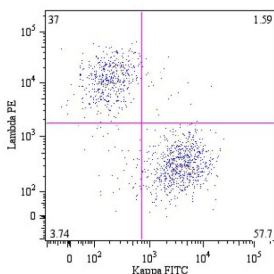


## Anti-Human Kappa Light Chain Antibody [A8B5] (FITC) (A86788)

### Specifications:

Name:	Anti-Human Kappa Light Chain Antibody [A8B5] (FITC)
Description:	Mouse monoclonal [A8B5] antibody to Human Kappa Light Chain (FITC).
Specificity:	This antibody reacts with kappa light chains (22.5 kDa) of immunoglobulins.
Applications:	Flow Cytometry
Recommended Dilutions:	Flow Cytometry: This reagent is designed for analysis of human blood cells using 20 $\mu$ l reagent / 100 $\mu$ l of whole blood or $10^6$ cells in a suspension.
Reactivity:	Human
Immunogen:	Unfortunately, this information is considered to be commercially sensitive.
Host:	Mouse
Clonality:	Monoclonal
Clone ID:	A8B5
Isotype:	IgG1
Conjugate:	FITC
Purification:	This antibody is conjugated with FITC under optimum conditions. The conjugate is purified by size-exclusion chromatography.
Product Form:	Liquid
Formulation:	Supplied in Phosphate Buffered Saline with 15 mM Sodium Azide.
Storage:	Store in the dark at 2-8°C. Do not freeze!
Disclaimer:	This product is for research use only. It is not intended for diagnostic or therapeutic use.

### Images:



B lymphocytes (CD19+) in a dot-plot Lambda PE vs. Kappa FITC. Kappa light chain detected by Anti-Kappa Light Chain Antibody (A86788) and lambda light chain by Anti-Lambda Light Chain Antibody (A86783), CD19 by Anti-CD19 Antibody [LT19].