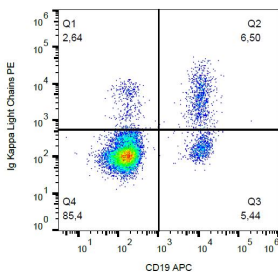


Anti-Human Kappa Light Chain Antibody [A8B5] (PE) (A86789)

Specifications:

Name:	Anti-Human Kappa Light Chain Antibody [A8B5] (PE)
Description:	Mouse monoclonal [A8B5] antibody to Human Kappa Light Chain (PE).
Specificity:	This antibody reacts with kappa light chains (22.5 kDa) of immunoglobulins.
Applications:	Flow Cytometry
Recommended Dilutions:	Flow Cytometry: This reagent is designed for analysis of human blood cells using 20 μ l reagent / 100 μ l of whole blood or 10^6 cells in a suspension.
Reactivity:	Human
Immunogen:	Unfortunately, this information is considered to be commercially sensitive.
Host:	Mouse
Clonality:	Monoclonal
Clone ID:	A8B5
Isotype:	IgG1
Conjugate:	PE
Purification:	This antibody is conjugated with PE under optimum conditions. The conjugate is purified by size-exclusion chromatography.
Product Form:	Liquid
Formulation:	Supplied in Phosphate Buffered Saline with 15 mM Sodium Azide.
Storage:	Store in the dark at 2-8°C. Do not freeze!
Disclaimer:	This product is for research use only. It is not intended for diagnostic or therapeutic use.

Images:



Surface staining of immunoglobulin kappa light chains in human peripheral blood with Anti-Kappa Light Chain Antibody (A86789).