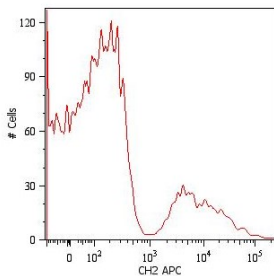


Anti-Human IgM Antibody [CH2] (APC) (A86806)

Specifications:

Name:	Anti-Human IgM Antibody [CH2] (APC)
Description:	Mouse monoclonal [CH2] antibody to Human IgM (APC).
Specificity:	This antibody reacts with Fc fragment of human IgM.
Applications:	Flow Cytometry
Recommended Dilutions:	Flow Cytometry: 1-4 µg/ml
Reactivity:	Human
Immunogen:	Purified human IgM.
Host:	Mouse
Clonality:	Monoclonal
Clone ID:	CH2
Isotype:	IgG1
Conjugate:	APC
Purification:	This antibody is conjugated with APC under optimum conditions. The conjugate is purified by size-exclusion chromatography.
Concentration:	0.1 mg/ml
Product Form:	Liquid
Formulation:	Supplied in Phosphate Buffered Saline with 15 mM Sodium Azide.
Storage:	Store in the dark at 2-8°C. Do not freeze!
Disclaimer:	This product is for research use only. It is not intended for diagnostic or therapeutic use.

Images:



Surface staining of human peripheral blood cells with Anti-IgM Antibody (A86806). Cells in the lymphocyte gate were used for analysis.