

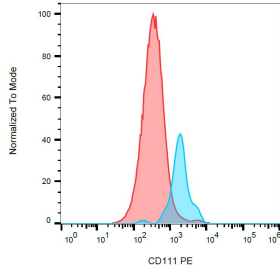
Anti-CD111 Antibody [R1.302] (PE) (A86818)

Specifications:

Name:	Anti-CD111 Antibody [R1.302] (PE)
Description:	Mouse monoclonal [R1.302] antibody to CD111 (PE).
Specificity:	The mouse monoclonal antibody R1.302 recognizes CD111 (also known as Nectin 1), a 75 kDa type I transmembrane glycoprotein broadly expressed on endothelial cells, epithelial cells, neuronal cells, megakaryocytes, and CD34-positive stem cells.
Applications:	Flow Cytometry
Recommended Dilutions:	Flow Cytometry: This reagent is designed for analysis of human blood cells using 10 µl reagent / 100 µl of whole blood or 10 ⁶ cells in a suspension.
Reactivity:	Human
Immunogen:	NIH/3T3 cells transfected with human CD111.
Host:	Mouse
Clonality:	Monoclonal
Clone ID:	R1.302
Isotype:	IgG1
Light Chains:	kappa
Conjugate:	PE
Purification:	This antibody is conjugated with PE under optimum conditions. The conjugate is purified by size-exclusion chromatography.
Product Form:	Liquid
Formulation:	Supplied in Phosphate Buffered Saline with 15 mM Sodium Azide.
Storage:	Store in the dark at 2-8°C. Do not freeze!
Disclaimer:	This product is for research use only. It is not intended for diagnostic or therapeutic use.

Anti-CD111 Antibody [R1.302] (PE) (A86818)

Images:



Surface staining of human peripheral blood with Anti-CD111 Antibody (A86818).