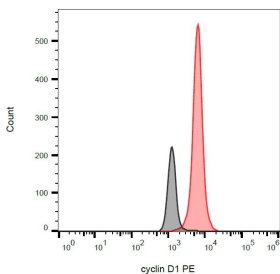


Anti-Cyclin D1 Antibody [DCS-6] (PE) (A86872)

Specifications:

Name:	Anti-Cyclin D1 Antibody [DCS-6] (PE)
Description:	Mouse monoclonal [DCS-6] antibody to Cyclin D1 (PE).
Specificity:	The mouse monoclonal antibody DCS-6 recognizes cyclin D1, an ubiquitously expressed 33 kDa protein that migrates as a 36 kDa band under reducing SDS-PAGE conditions.
Applications:	Flow Cytometry
Recommended Dilutions:	Flow Cytometry: 1 µg/ml
Reactivity:	Human, Mouse, Rat, Non-Human Primates
Immunogen:	Recombinant human cyclin D1 (amino acids 1-295).
Host:	Mouse
Clonality:	Monoclonal
Clone ID:	DCS-6
Isotype:	IgG2a
Conjugate:	PE
Purification:	This antibody is conjugated with PE under optimum conditions. The conjugate is purified by size-exclusion chromatography.
Product Form:	Liquid
Formulation:	Supplied in Phosphate Buffered Saline with 15 mM Sodium Azide.
Storage:	Store in the dark at 2-8°C. Do not freeze!
Disclaimer:	This product is for research use only. It is not intended for diagnostic or therapeutic use.

Images:



Intracellular staining of Cyclin D1 in LCL HLA-G transfectants with Anti-Cyclin D1 Antibody (A86872).