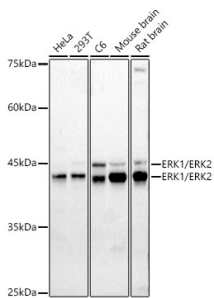


## Anti-ERK1 + ERK2 Antibody (A87643)

### Specifications:

Name:	Anti-ERK1 + ERK2 Antibody
Description:	Rabbit polyclonal antibody to ERK1 + ERK2.
Applications:	WB, IHC, ICC/IF
Recommended Dilutions:	WB: 1:500-1:1,000, IHC: 1:50-1:200, ICC/IF: 1:50-1:200
Reactivity:	Human, Mouse, Rat
Immunogen:	A synthetic peptide corresponding to a sequence within amino acids 200-300 of human ERK1 / ERK2 (NP_620407.1/NP_002737.2).
Sequence:	LNSKGYTKSIDIWSVGCILAEMLSNRPIFPKGHYLDQLNHILGILGSPSQEDLNCIIN LKARNYLLSLPHKNKVPWNRLFPNADSKALDLLDKMLTFNPHK
Host:	Rabbit
Clonality:	Polyclonal
Isotype:	IgG
Conjugate:	Unconjugated
Purification:	Affinity purification.
Molecular Weight:	42 kDa / 44 kDa
Product Form:	Liquid
Formulation:	Supplied in Phosphate Buffered Saline, pH 7.3, with 50% Glycerol and 0.05% Proclin 300.
Storage:	Shipped at 4°C. Upon delivery aliquot and store at -20°C. Avoid freeze / thaw cycles.
Disclaimer:	This product is for research use only. It is not intended for diagnostic or therapeutic use.

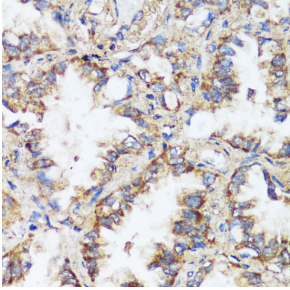
### Images:



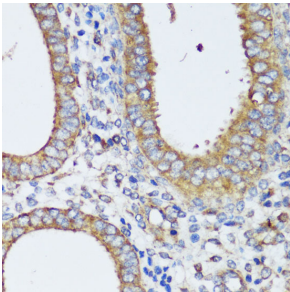
Western blot analysis of extracts of various cell lines, using Anti-ERK1 + ERK2 Antibody (A87643) at 1:1,000 dilution. The secondary antibody was Goat Anti-Rabbit IgG H&L Antibody (HRP) at 1:10,000 dilution. Lysates/proteins were present at 25µg per lane. The blocking buffer used was 3% non-fat dry milk in TBST. Detection was with a ECL Basic Kit. Exposure time: 90s.

## Anti-ERK1 + ERK2 Antibody (A87643)

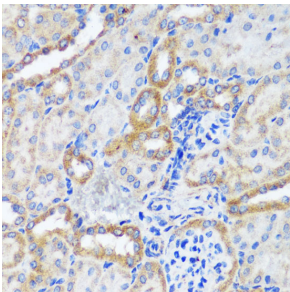
Images continued:



Immunohistochemistry analysis of paraffin-embedded human lung cancer using Anti-ERK1 + ERK2 Antibody (A87643) at a dilution of 1:200 (40x lens). Perform microwave antigen retrieval with 10 mM PBS buffer pH 7.2 before commencing with IHC staining protocol.



Immunohistochemistry analysis of paraffin-embedded human uterine cancer using Anti-ERK1 + ERK2 Antibody (A87643) at a dilution of 1:200 (40x lens). Perform microwave antigen retrieval with 10 mM PBS buffer pH 7.2 before commencing with IHC staining protocol.



Immunohistochemistry analysis of paraffin-embedded mouse kidney using Anti-ERK1 + ERK2 Antibody (A87643) at a dilution of 1:200 (40x lens). Perform microwave antigen retrieval with 10 mM PBS buffer pH 7.2 before commencing with IHC staining protocol.