

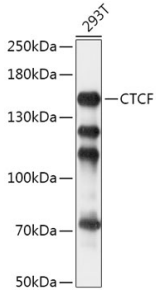
## Anti-CTCF Antibody (A88242)

### Specifications:

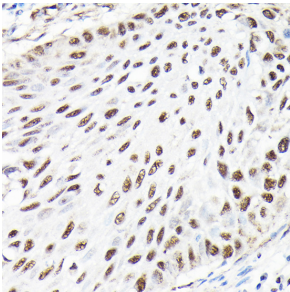
Name:	Anti-CTCF Antibody
Description:	Rabbit polyclonal antibody to CTCF.
Applications:	WB, IHC, ICC/IF, IP, ChIP
Recommended Dilutions:	WB: 1:1,000-1:2,000, IHC: 1:50-1:200, ICC/IF: 1:50-1:200, IP: 1:50-1:100, ChIP: 1:50-1:200
Reactivity:	Human, Mouse, Rat
Immunogen:	Recombinant fusion protein containing a sequence corresponding to amino acids 1-260 of human CTCF (NP_006556.1).
Sequence:	MEGDAVEAIVEESETFIKGERKTYQRRREGGQEEDACHLPQNQTDGGGEVVDVNSSV QMVMMEQLDPTLLQMKTEVMEGTVAPEAEEAVDDTQIITLQVVNMEEQPINIGELQLV QVPVPVTVPVATTSVEELQGAYENEVSKEGLAESEPMICHTLPLPEGFQVVKVGANGE VETLEQGELPPQEDPSWQKDPDYQPPAKKTKKTKKSKLRYTEEGKDVDVSVYDFEEEQ QEGLLSEVNAEKVVGNMKPPKPTKIKKK
Host:	Rabbit
Clonality:	Polyclonal
Isotype:	IgG
Conjugate:	Unconjugated
Purification:	Affinity purification.
Molecular Weight:	140 kDa
Product Form:	Liquid
Formulation:	Supplied in Phosphate Buffered Saline, pH 7.3, with 50% Glycerol and 0.01% Thiomersal.
Storage:	Shipped at 4°C. Upon delivery aliquot and store at -20°C. Avoid freeze / thaw cycles.
Disclaimer:	This product is for research use only. It is not intended for diagnostic or therapeutic use.

## Anti-CTCF Antibody (A88242)

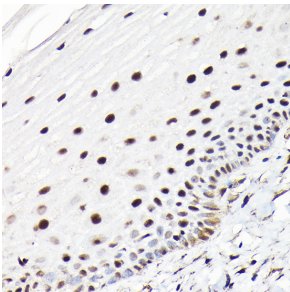
### Images:



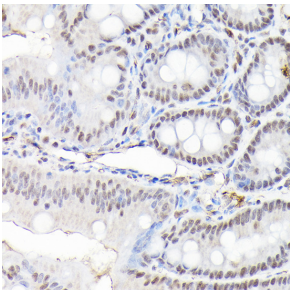
Western blot analysis of extracts of 293T cells, using Anti-CTCF Antibody (A88242) at 1:1,000 dilution. The secondary antibody was Goat Anti-Rabbit IgG H&L Antibody (HRP) at 1:10,000 dilution. Lysates/proteins were present at 25 $\mu$ g per lane. The blocking buffer used was 3% non-fat dry milk in TBST. Detection was with a ECL Basic Kit. Exposure time: 5s.



Immunohistochemistry analysis of paraffin-embedded human lung cancer using Anti-CTCF Antibody (A88242) at a dilution of 1:100 (40x lens). Perform high pressure antigen retrieval with 10 mM citrate buffer pH 6.0 before commencing with IHC staining protocol.



Immunohistochemistry analysis of paraffin-embedded human normal cervix using Anti-CTCF Antibody (A88242) at a dilution of 1:100 (40x lens). Perform high pressure antigen retrieval with 10 mM citrate buffer pH 6.0 before commencing with IHC staining protocol.



Immunohistochemistry analysis of paraffin-embedded mouse colon using Anti-CTCF Antibody (A88242) at a dilution of 1:100 (40x lens). Perform high pressure antigen retrieval with 10 mM citrate buffer pH 6.0 before commencing with IHC staining protocol.