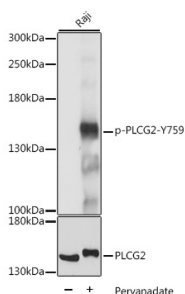


Anti-PLCG 2 (phospho Tyr759) Antibody (A88328)

Specifications:

Name:	Anti-PLCG 2 (phospho Tyr759) Antibody
Description:	Rabbit polyclonal antibody to PLCG 2 (phospho Tyr759).
Applications:	WB
Recommended Dilutions:	WB: 1:500-1:2,000
Reactivity:	Human
Immunogen:	A synthetic phosphorylated peptide around Y759 of human PLCG2 (NP_002652.2).
Sequence:	RMYVD
Host:	Rabbit
Clonality:	Polyclonal
Isotype:	IgG
Conjugate:	Unconjugated
Purification:	Affinity purification.
Molecular Weight:	150 kDa
Product Form:	Liquid
Formulation:	Supplied in Phosphate Buffered Saline, pH 7.3, with 50% Glycerol and 0.01% Thiomersal.
Storage:	Shipped at 4°C. Upon delivery aliquot and store at -20°C. Avoid freeze / thaw cycles.
Disclaimer:	This product is for research use only. It is not intended for diagnostic or therapeutic use.

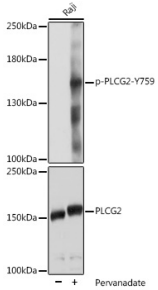
Images:



Western blot analysis of extracts of Raji cells, using Anti-PLCG 2 (phospho Tyr759) Antibody (A88328) at 1:2,000 dilution or PLCG2 antibody (A2182). Raji cells were treated by Pervanadate (1 mM) at 37°C for 30 minutes. The secondary antibody was Goat Anti-Rabbit IgG H&L Antibody (HRP) at 1:10,000 dilution. Lysates/proteins were present at 25µg per lane. The blocking buffer used was 3% BSA. Detection was with a ECL Basic Kit. Exposure time: 1s.

Anti-PLCG 2 (phospho Tyr759) Antibody (A88328)

Images continued:



Western blot analysis of extracts of Raji cells, using Anti-PLCG 2 (phospho Tyr759) Antibody (A88328) at 1:2,000 dilution or PLCG2 antibody (A2182). Raji cells were treated by Pervanadate (1 mM) at 37°C for 30 minutes. The secondary antibody was Goat Anti-Rabbit IgG H&L Antibody (HRP) at 1:10,000 dilution. Lysates/proteins were present at 25µg per lane. The blocking buffer used was 3% BSA. Detection was with a ECL Basic Kit. Exposure time: 1s.