

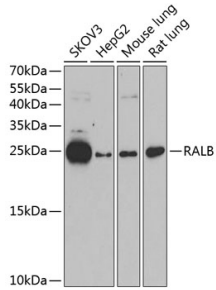
Anti-RALB Antibody (A88824)

Specifications:

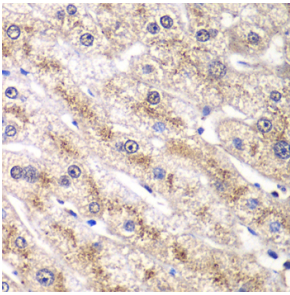
Name:	Anti-RALB Antibody
Description:	Rabbit polyclonal antibody to RALB.
Applications:	WB, IHC
Recommended Dilutions:	WB: 1:500-1:2,000, IHC: 1:50-1:200
Reactivity:	Human, Mouse, Rat
Immunogen:	Recombinant fusion protein containing a sequence corresponding to amino acids 1-206 of human RALB (NP_002872.1).
Sequence:	MAANKSKGQSSLALHKVIMVGSGGVGKSALTLQFMYDEFVEDYEPTKADSYRKKVLD GEEVQIDILDTAGQEDYAAIRDNYFRSGEGFLLVFSITEHESFTATAAEFREQILRVKA EEDKIPLLVGNKSDLEERRQVPVEEARSKAEEWGVQYVETSAKTRANVDKVFDFLMR EIRTKKMSENKDKNGKKSSKNKKSFKERCCLL
Host:	Rabbit
Clonality:	Polyclonal
Isotype:	IgG
Conjugate:	Unconjugated
Purification:	Affinity purification.
Molecular Weight:	23 kDa
Product Form:	Liquid
Formulation:	Supplied in Phosphate Buffered Saline, pH 7.3, with 50% Glycerol and 0.02% Sodium Azide.
Storage:	Shipped at 4°C. Upon delivery aliquot and store at -20°C. Avoid freeze / thaw cycles.
Disclaimer:	This product is for research use only. It is not intended for diagnostic or therapeutic use.

Anti-RALB Antibody (A88824)

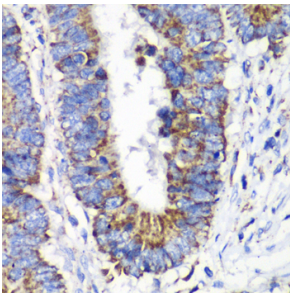
Images:



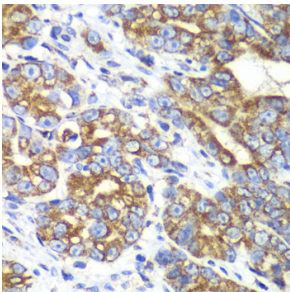
Western blot analysis of extracts of various cell lines, using Anti-RALB Antibody (A88824) at 1:1,000 dilution. The secondary antibody was Goat Anti-Rabbit IgG H&L Antibody (HRP) at 1:10,000 dilution. Lysates/proteins were present at 25 μ g per lane. The blocking buffer used was 3% non-fat dry milk in TBST. Detection was with a ECL Basic Kit. Exposure time: 90s.



Immunohistochemistry analysis of paraffin-embedded human liver damage using Anti-RALB Antibody (A88824) at a dilution of 1:100 (40x lens).



Immunohistochemistry analysis of paraffin-embedded human colon carcinoma tissue using Anti-RALB Antibody (A88824) at a dilution of 1:100 (40x lens).



Immunohistochemistry analysis of paraffin-embedded human gastric cancer using Anti-RALB Antibody (A88824) at a dilution of 1:100 (40x lens).