

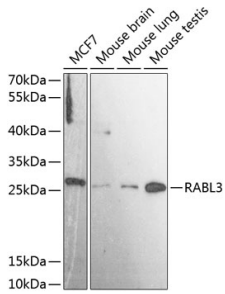
## Anti-RABL3 Antibody (A88971)

### Specifications:

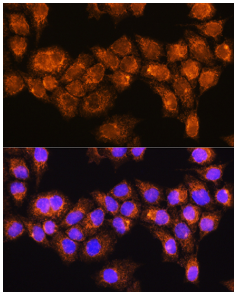
Name:	Anti-RABL3 Antibody
Description:	Rabbit polyclonal antibody to RABL3.
Applications:	WB, ICC/IF
Recommended Dilutions:	WB: 1:500-1:2,000, ICC/IF: 1:50-1:200
Reactivity:	Human, Mouse
Immunogen:	Recombinant fusion protein containing a sequence corresponding to amino acids 1-236 of human RABL3 (NP_776186.2).
Sequence:	MASLDRVKVLVLGDSGVGKSSLVHLLCQNQVLGNPSWTVGCSVDVRVHDYKEGTPEEK TYIYELWDVGGSVGSASSVKSTRAVFYNSVNGIIFVHDLTNKKSSQNLRRWSLEALNR DLVPTGVLVTNGDYDQEQFADNQIPLLIVIGTKLDQIHETKRHEVLTRTAFLAEDFNPE EINLDCTNPRYLAAGSSNAVKLSRFFDKVIEKRYFLREGNQIPGFPDRKRFGAGTLKS LHYD
Host:	Rabbit
Clonality:	Polyclonal
Isotype:	IgG
Conjugate:	Unconjugated
Purification:	Affinity purification.
Molecular Weight:	26 kDa
Product Form:	Liquid
Formulation:	Supplied in Phosphate Buffered Saline, pH 7.3, with 50% Glycerol and 0.01% Thiomersal.
Storage:	Shipped at 4°C. Upon delivery aliquot and store at -20°C. Avoid freeze / thaw cycles.
Disclaimer:	This product is for research use only. It is not intended for diagnostic or therapeutic use.

## Anti-RABL3 Antibody (A88971)

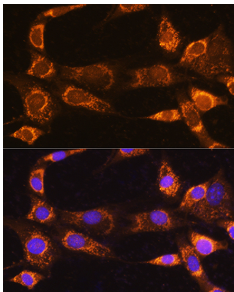
### Images:



Western blot analysis of extracts of various cell lines, using Anti-RABL3 Antibody (A88971) at 1:3,000 dilution. The secondary antibody was Goat Anti-Rabbit IgG H&L Antibody (HRP) at 1:10,000 dilution. Lysates/proteins were present at 25 $\mu$ g per lane. The blocking buffer used was 3% non-fat dry milk in TBST. Detection was with a ECL Basic Kit. Exposure time: 90s.



Immunofluorescence analysis of HeLa cells using Anti-RABL3 Antibody (A88971) at a dilution of 1:100. DAPI was used to stain the cell nuclei (blue).



Immunofluorescence analysis of NIH/3T3 cells using Anti-RABL3 Antibody (A88971) at a dilution of 1:100. DAPI was used to stain the cell nuclei (blue).