

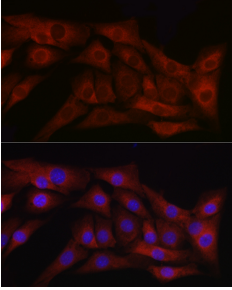
Anti-TGF beta 1 Antibody (A89925)

Specifications:

Name:	Anti-TGF beta 1 Antibody
Description:	Rabbit polyclonal antibody to TGF beta 1.
Applications:	ICC/IF
Recommended Dilutions:	ICC/IF: 1:50-1:200
Reactivity:	Mouse, Rat
Immunogen:	Recombinant fusion protein containing a sequence corresponding to amino acids 30-278 of human TGF beta 1 (NP_000651.3).
Sequence:	LSTCKTIDMELVKRKRIEAIKRGQILSKLRLASPPSQGEVPPGPLPEAVLALYNSTRDR VAGESAEPEPEPEADYYAKEVTRVLMVETHNEIYDKFKQSTHSIYMFNTSELREAVP EPVLLSRAELRLLRLKLVKVEQHVELYQKYSNNSWRYLSNRLAPSDSPEWLSFDVTGV VRQWLSRGGIEGFRLSAHCSCDSRDNTLQVDINGFTTGRRGDLATIHGMNRPFLLLM ATPLERAQHLQSSRHRR
Host:	Rabbit
Clonality:	Polyclonal
Isotype:	IgG
Conjugate:	Unconjugated
Purification:	Affinity purification.
Product Form:	Liquid
Formulation:	Supplied in Phosphate Buffered Saline, pH 7.3, with 50% Glycerol and 0.01% Thiomersal.
Storage:	Shipped at 4°C. Upon delivery aliquot and store at -20°C. Avoid freeze / thaw cycles.
Disclaimer:	This product is for research use only. It is not intended for diagnostic or therapeutic use.

Anti-TGF beta 1 Antibody (A89925)

Images:



Immunofluorescence analysis of NIH/3T3 cells using Anti-TGF beta 1 Antibody (A89925) at a dilution of 1:100 (40x lens). DAPI was used to stain the cell nuclei (blue).